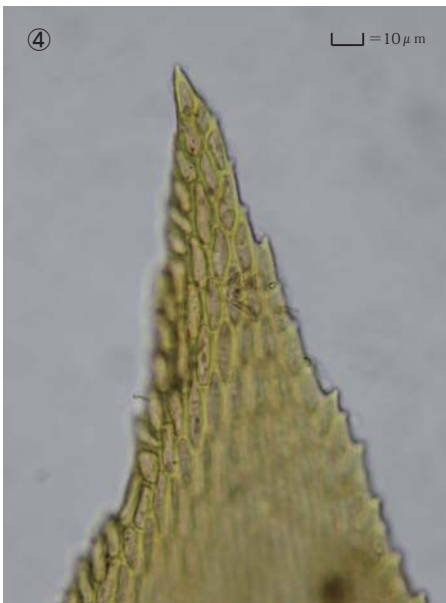
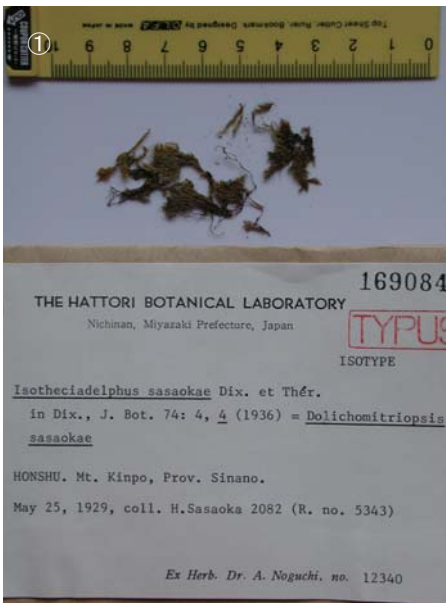


Isotheciadelphus sasaokae Dix. et Thér.

J. Bot. 74: 4, 4 (1936),

Isotype. Japan. Honshu. Prov. Shinano, Mt. Kinpo. coll. H. Sasaoka 2082 (R. no. 5343)
May 25, 1929, in Herb. Noguchi, no.12340, NICH 169084.



① ② ③ Plant. ④ Cells at apex of stem leaf. ⑤ Median laminal cells of stem leaf. ⑥ Cells at base of stem leaf.