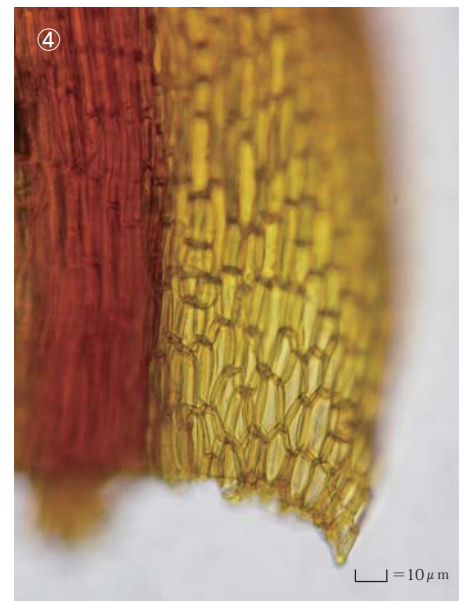
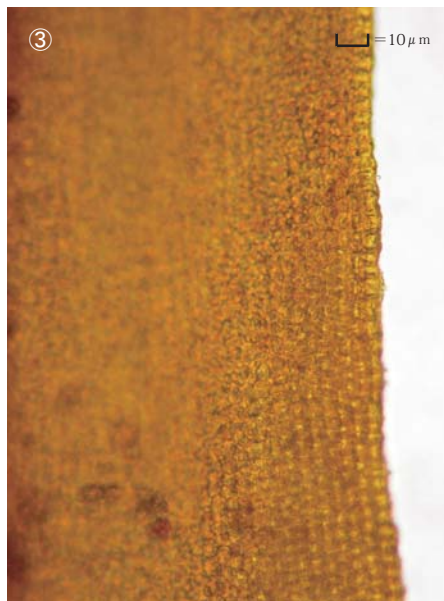
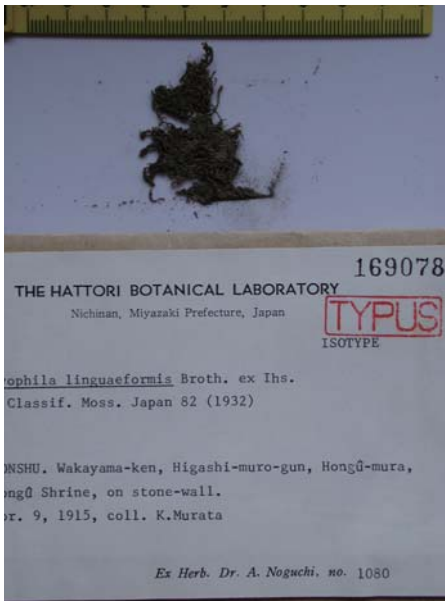


Hyophila linguaeformis Broth. ex Ihsiba

Classif. Moss. Japan 82 (1932).

Isotype. Japan. Honshu, Wakayama-ken, Higashi-muro-gun, Honguh-mura, Honguh-shrine, on stone wall. coll. K. Murata, April 9, 1915. Herb. Noguchi, no.1080, NICH 169078.



① Leaf. ② Cells at apex of leaf. ③ Median laminal cells. ④ Cells at base of leaf.