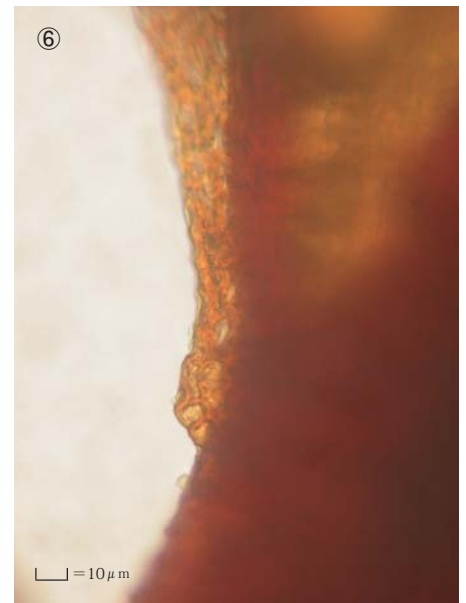
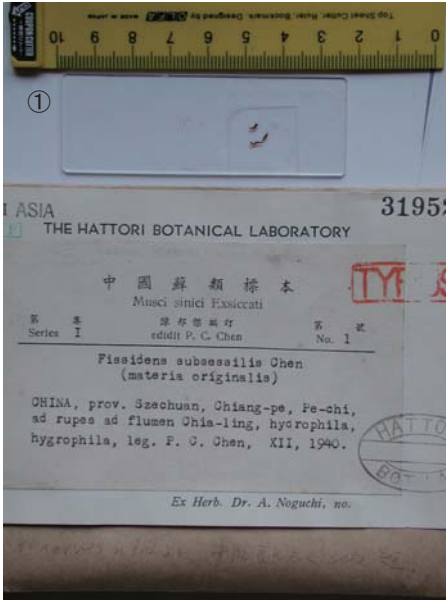


## *Fissidens subsessilis* Chen.

Contr. Inst. Biol. Grad. School Coll. Sc. Nat. Centr. Univ. Chung-king 1: 1 (1943).  
 Isotype. China, Szechuan, Chiang-pe, Pe-chi, ad rupes ad flumen Chia-ling,  
 hydrophila, hygrophila,  
 coll. P. C. Chen, Dec. 1949, NICH 319523.



① Label. Branch leaf ② Plants. f. ③ Plant. Median laminal cells of branch leaf. ④ Cells at apex of branch leaf. ⑤ Marginal cells of leaf. ⑥ Cells at base of leaf.