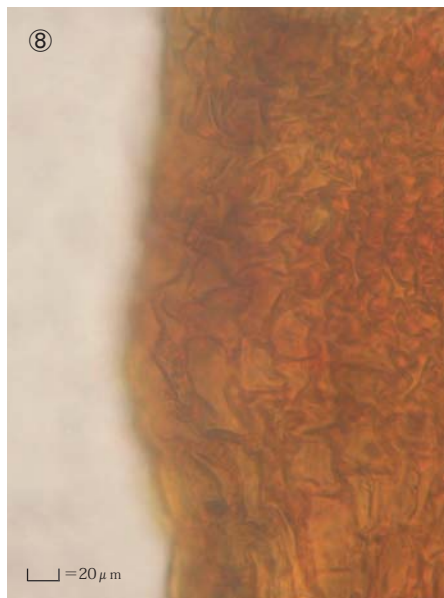
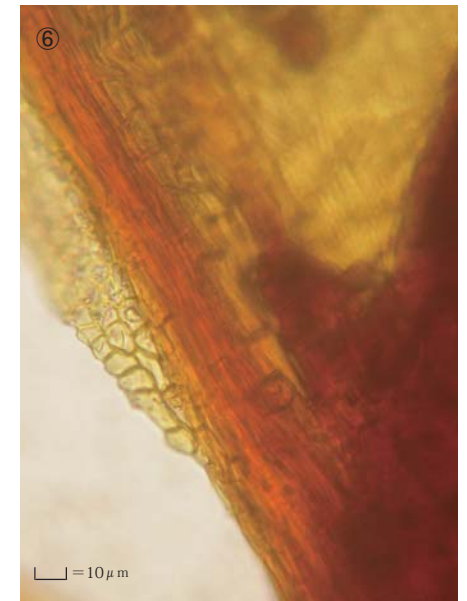
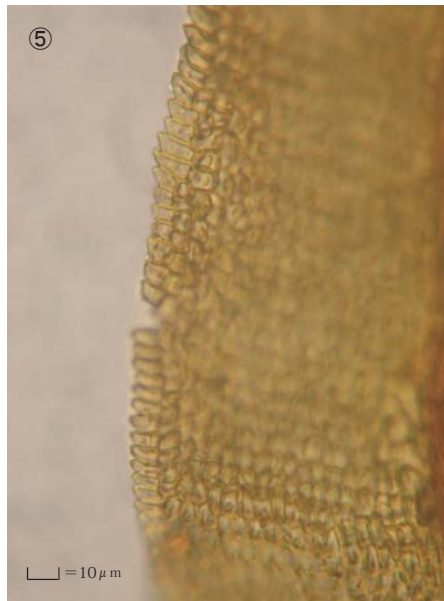
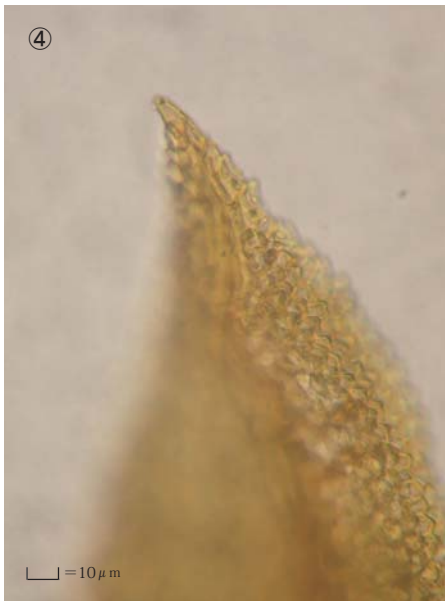
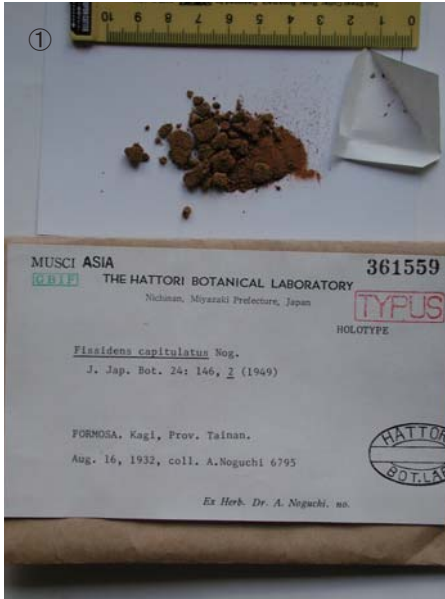


Fissidens capitulatus Nog.

J. Jpn. Bot. 24: 146, 1949.

Holotype. China. Taiwan, Prov. Tainan, Kagi, coll. A. Noguchi,
Aug. 16, 1932, No. 6795, NICH 361559.



① Label. ② A fertile plant.
③ Leaves. ④ Cells at apex of leaf
⑤ Median laminal cells. ⑥ Cells at base of dorsal lamina.
⑦ Operculum. ⑧ Exothecial cells.