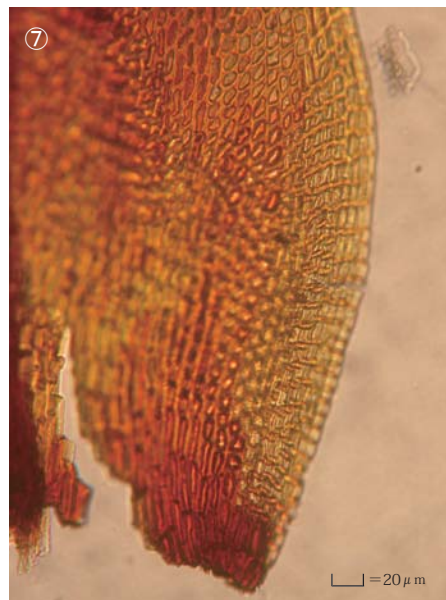
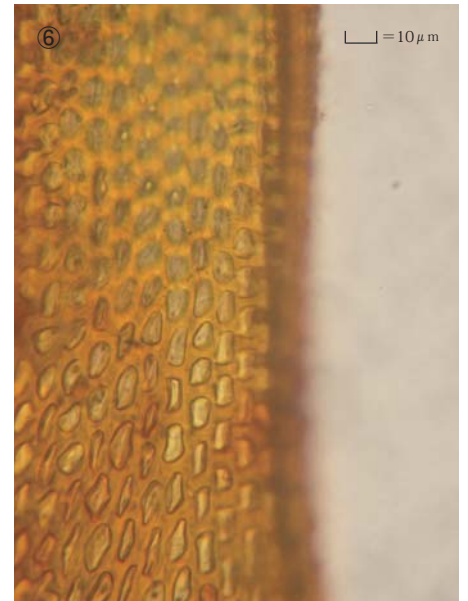
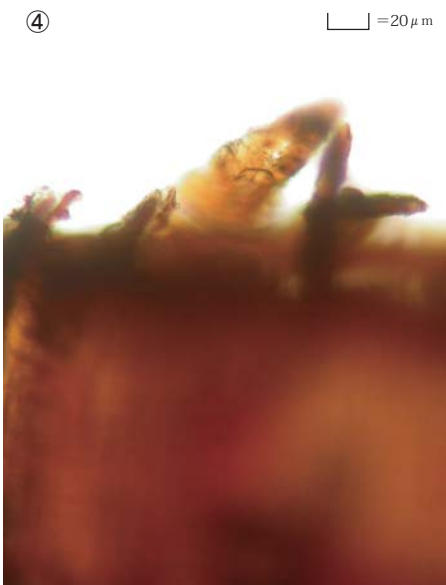
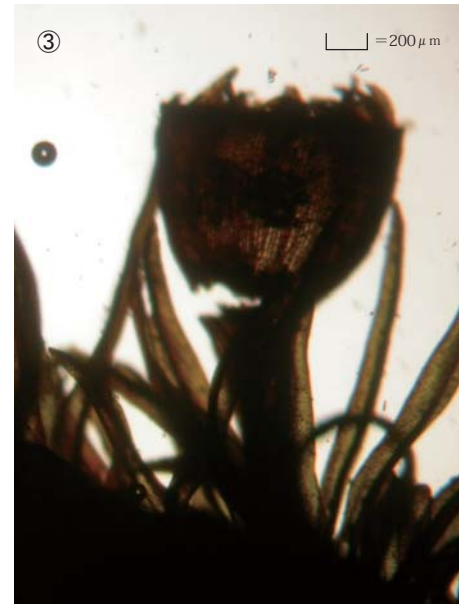
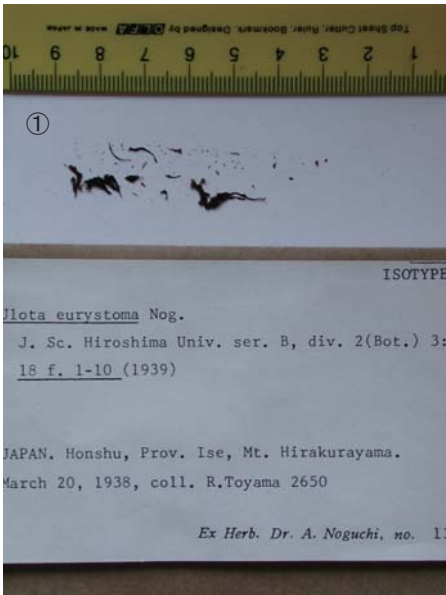


*Ulota eurystoma* Nog.

J. Sc. Hiroshima Univ., ser. B, Div. 2(Bot.) 3: 213. 18 f. 1-10 (1939).

Isotype. Japan. Honshu. Prov. Ise, Mt. Hirakura-yama.

coll. R. Toyama no. 2650, Mar. 20, 1938, Herb. Noguchi, no.13136, NICH 173637.



①②③ Capsules. ④ Peristome teeth. ⑤ Cells at apex of stem leaf. ⑥ Median laminal cells of stem leaf. ⑦ Cells at base of branch leaf.