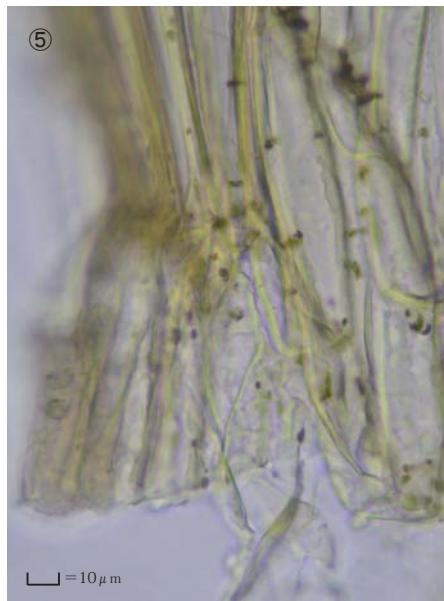
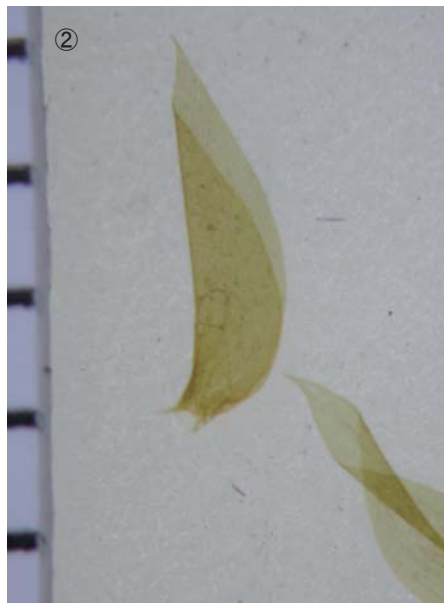
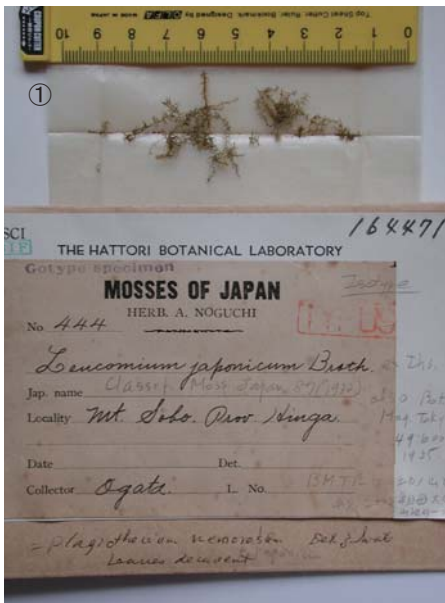


Leucomium japonicum Broth.

Classif. Moss. Japan 87 (1932).

Isotype. Japan. Kyushu. Prov. Hyuga, Mt. Sobo,
coll. Ogata, NICH 164471.



①② Stem leaf. ③ Cells at apex of stem leaf. ④ Median laminal cells of stem leaf. ⑤ Cells at base of stem leaf.