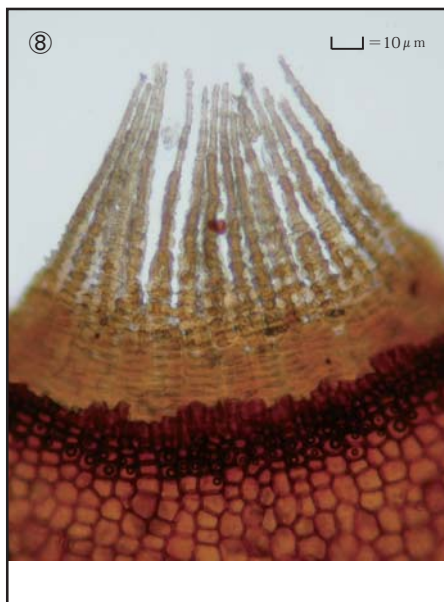
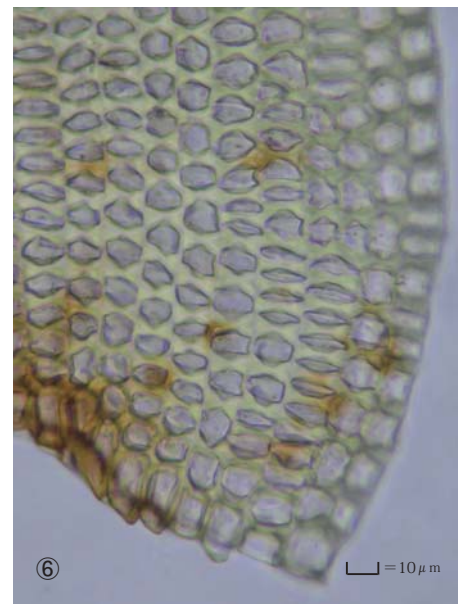
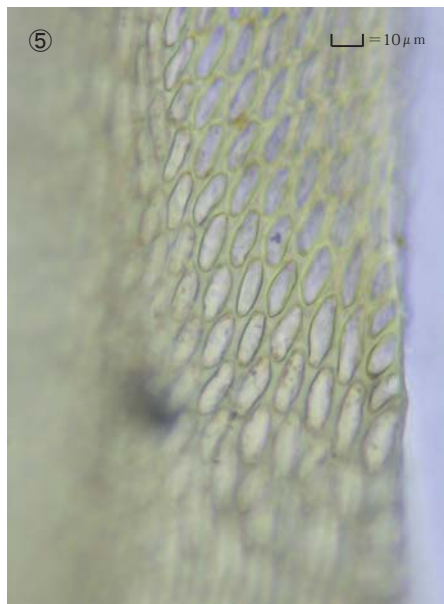
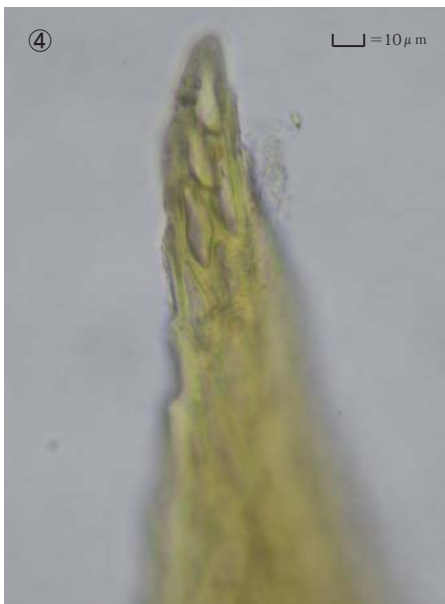
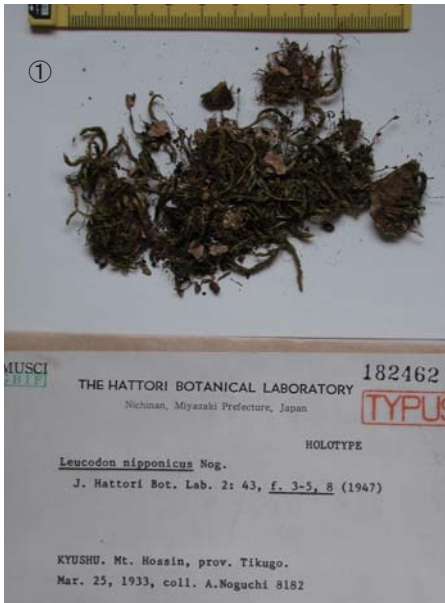


Leucodon nipponicus Nog.

J. Hattori. Bot. Lab. 2: 43, f. 3-5, 8 (1947).

Holotype. Japan. Kyushu. Prov. Chikugo, Mt. Hossin, coll.

A. Noguchi 8182, Mar. 25, 1933, NICH 182462.



①②③ Stem leaf. ④ Cells at apex of stem leaf. ⑤ Median laminal cells of stem leaf. ⑥ Cells at base of stem leaf.