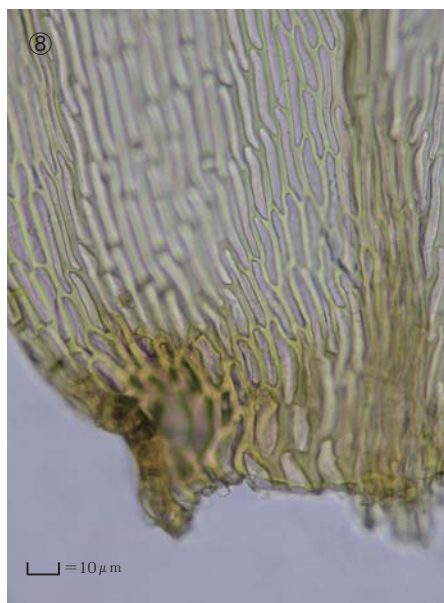
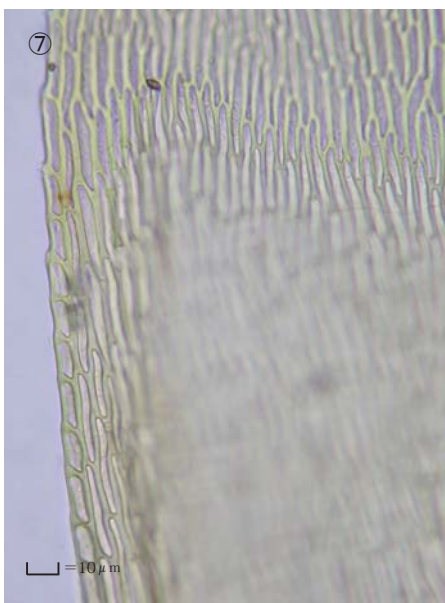
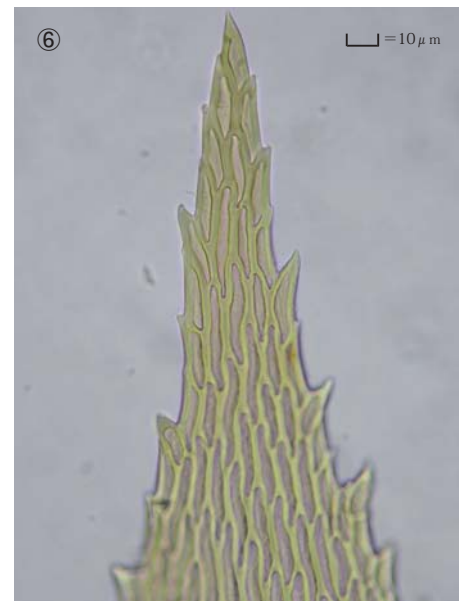
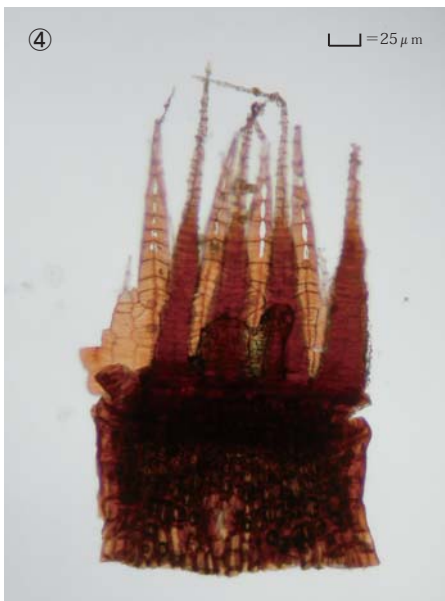
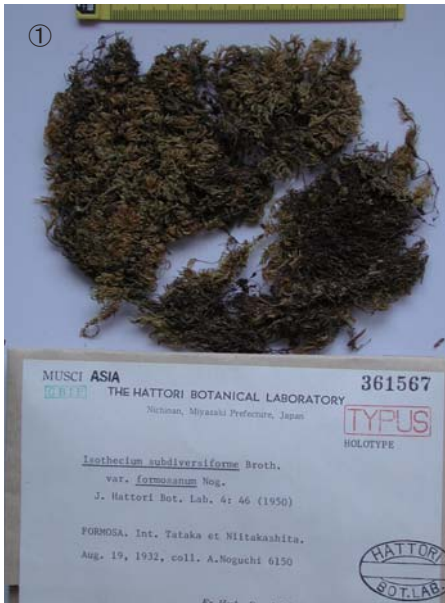


Isothecium subdiversiforme Broth. var. *formosanum* Nog.

J. Hattori Bot. Lab. 4: 46, 1950.

Holotype. Taiwan, Tainan, Mt. Ari, between Tahtaka and Niitaka-shita,
coll. A. Noguchi, no. 6150, Aug. 19, 1932, NICH 361567.



① ② ③ ④ ⑤ Plant. ⑥ Cells at apex of stem leaf. ⑦ Median laminal cells of stem leaf. ⑧ Cells at base of stem leaf.