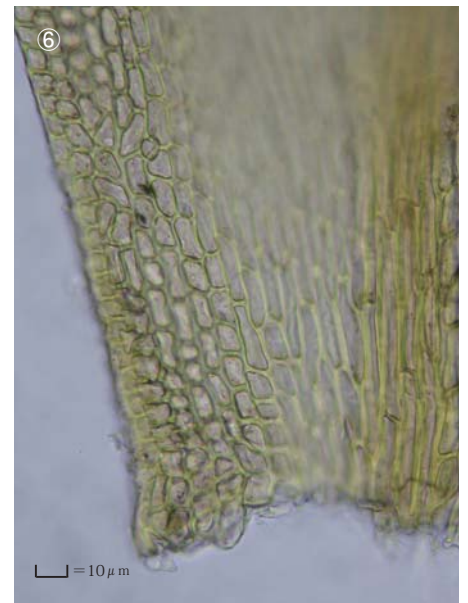
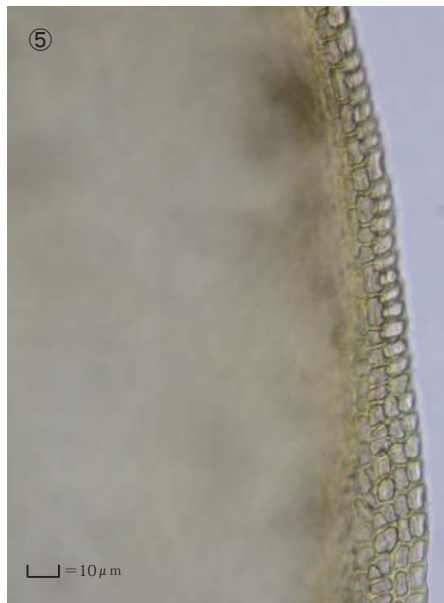
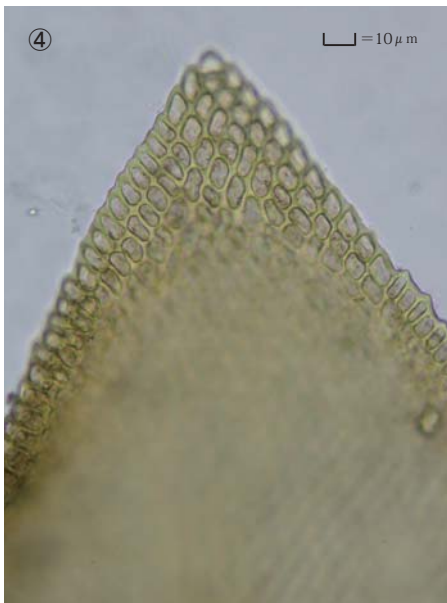
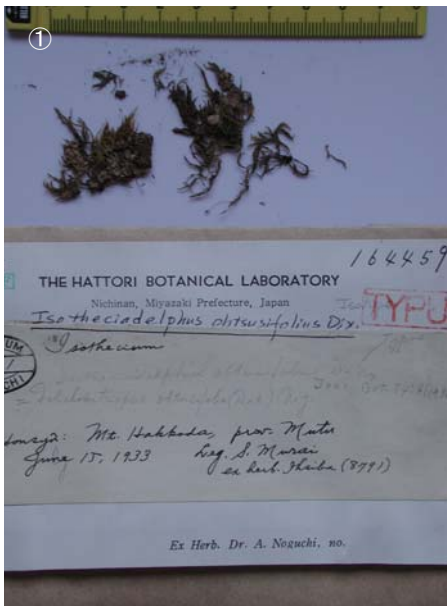


Isotheciadelphus obtususifolius Dix

J. Bot. 74: 4 (1936).

Isotype. Japan. Honshu. Prov. Mutsu, Mt. Hakkoda. coll. Murai, June 15, 1933, Hb. Iishiba 8791, Noguchi, NICH 164459.



① ② ③ Stem leaf. ④ Cells at apex of stem leaf. ⑤ Median laminal cells of stem leaf. ⑥ Cells at base of stem leaf.