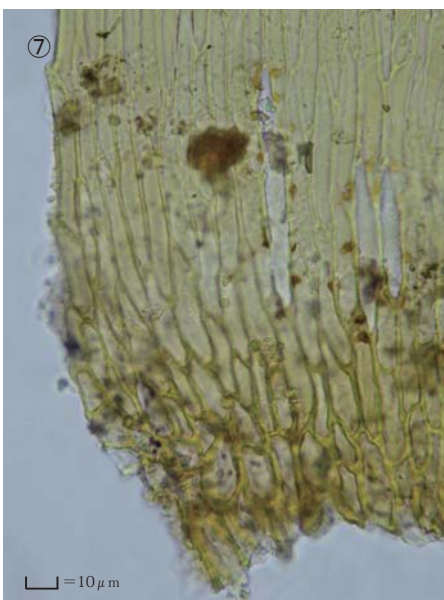
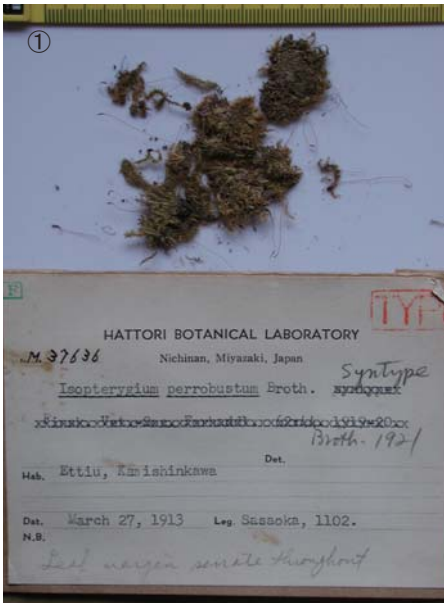


Isopterygium perrobustum Broth.

Finsk. Vet.-Soc. Forhandl. 62:44. (1921).

Syntype. Japan. Honshu, Ettyu, Kami-shinkawa. coll. Sasaoka 1102,
March 27, 1913, NICH M37636.



① ② ③ ④ Plant. ⑤ Cells at apex of stem leaf. ⑥ Median laminal cells of stem leaf. ⑦ Cells at base of stem leaf.