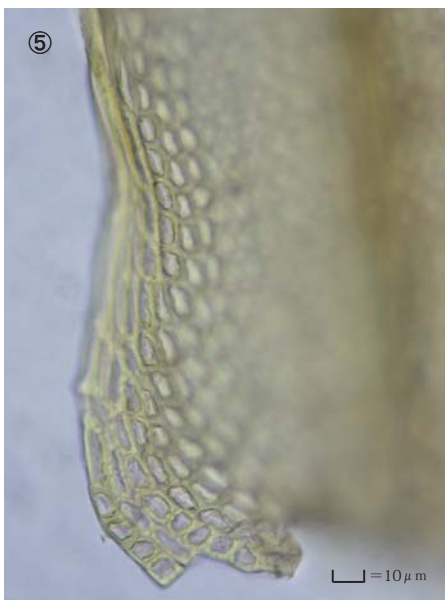
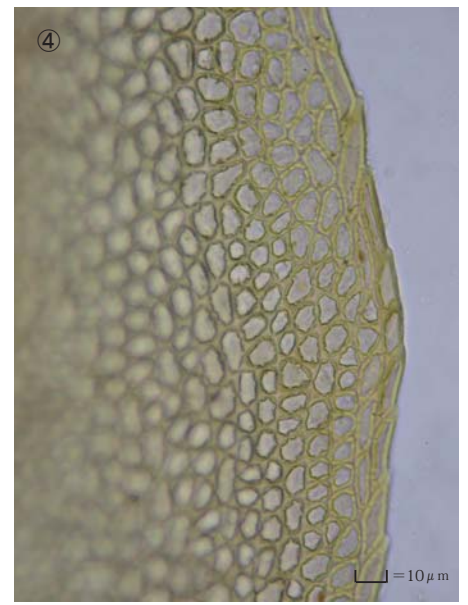
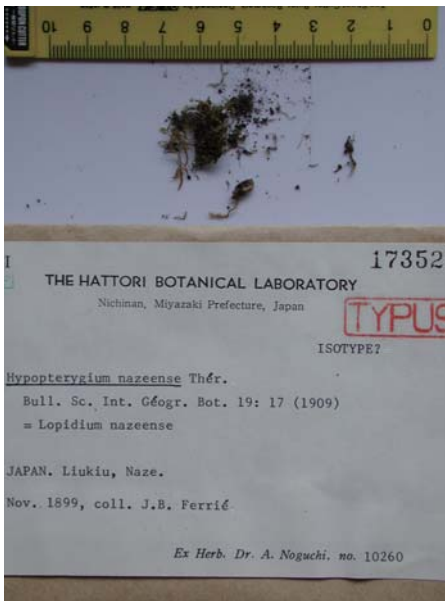


# *Hypopterygium nazeense* Thér.

Bull. Soc. Int. Geogr. Bot. 19: 17 (1909).

Isotype. Japan. Ryukyu, Naze, coll. J. B. Ferrie,  
Nov. 1899 in Herb. Noguchi, no.10260, NICH 173526.



① Plant. ② Lateral leaves. ③ Cells at apex of lateral leaf. ④ Median laminal cells of lateral leaf. ⑤ Cells at base of lateral leaf. ⑥ Rhizoids.