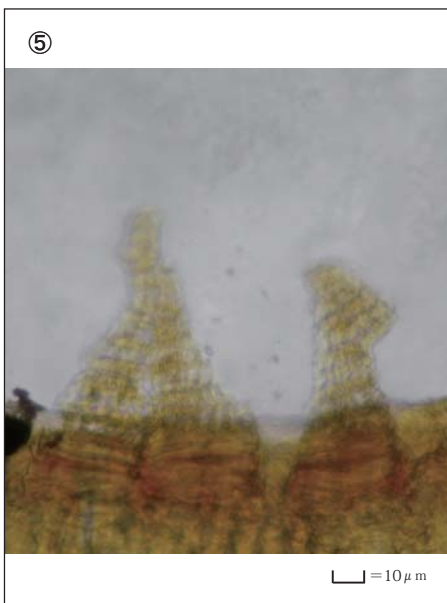
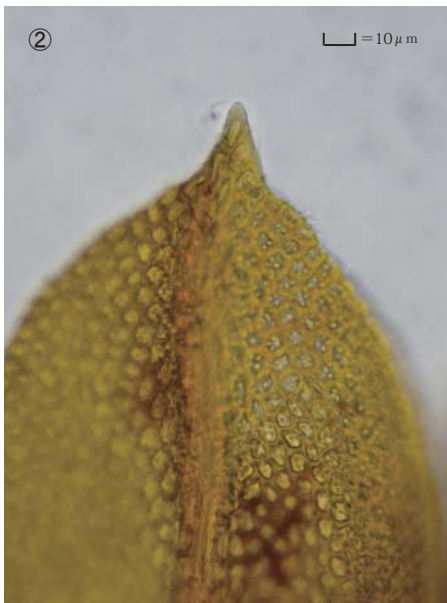
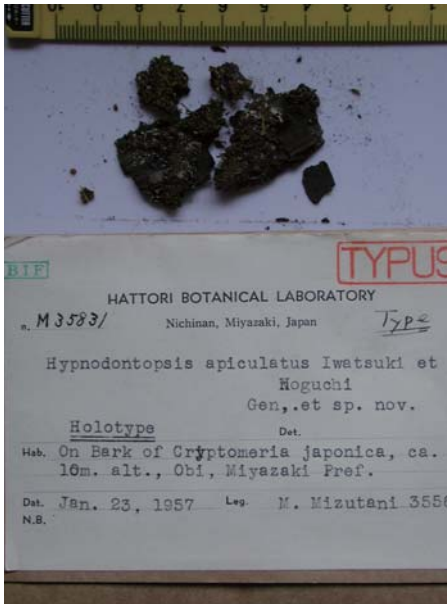


Hypnodontopsis apiculata Iwats. et Nog.

Bryologist 60: 304 (1957).

Holotype. Japan. Kyushu. Miyazaki-ken, Nichinan-shi, Obi, on bark of *Criptomeria japonica*, ca. 10m alt., coll. M. Mizutani, Jan. 23, 1957, NICH M 35831.



① Plant ② Cells at apex of leaf. ③ Median laminal cells of leaf. ④ Cells at base of leaf ⑤ Peristome teeth. ⑥ Propagule.