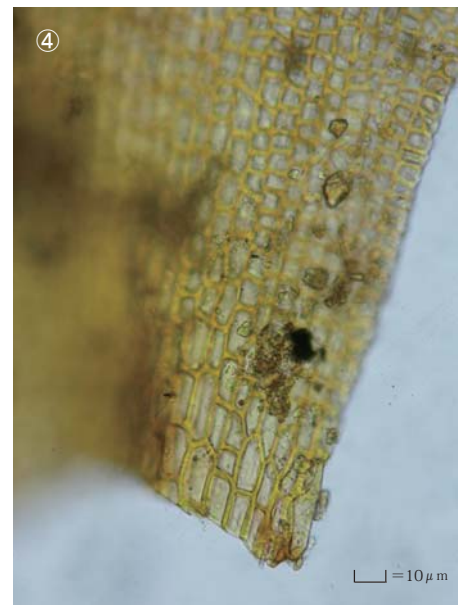
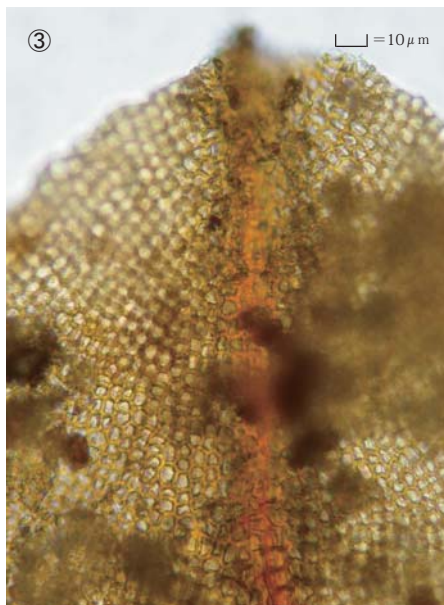
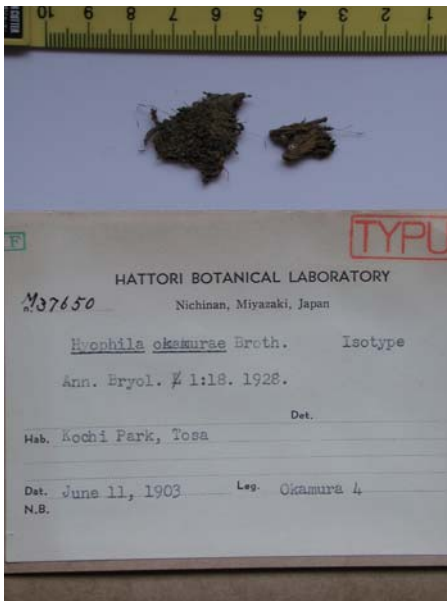


Hyophila okamurae Broth.

Ann. Bryol. 1:18. (1928).

Isotype. Japan. Shikoku. Prov. Tosa, Kochi Park.

S. Okamura, June 11, 1903, NICH M37650.



① Capsule ② Stem leaf ③ Cells at apex of stem leaf ④ Median laminal cells of stem leaf ⑤ Cells at base of stem leaf