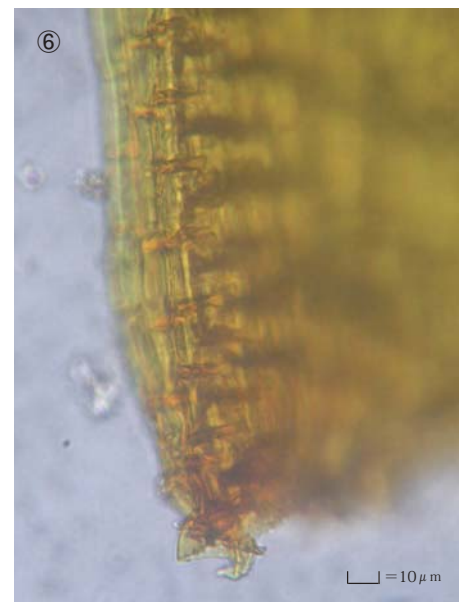
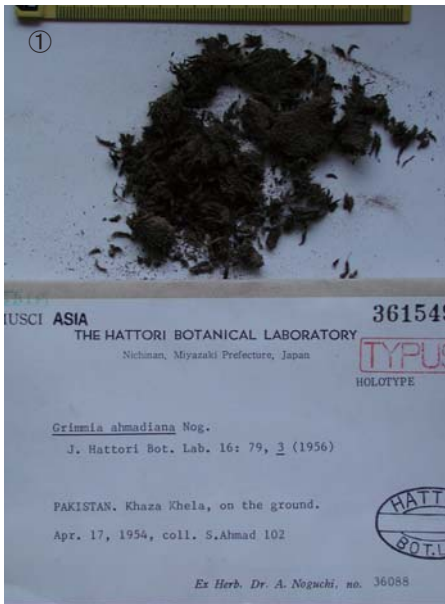


Grimmia ahmadiana Nog., J. Hattori Bot. Lab. 16: 79 (1956).361549.

Holotype. Pakistan. Khaza Khela, on ground, Apr. 17, 1954,
coll. S. Ahmad 102, NICH 361549.



① Label. ② Plants. ③ Plant. ④ Leaves. ⑤ Cells at apex of leaf. ⑥ Cells at base of leaf. ⑦ Plant with a capsule.