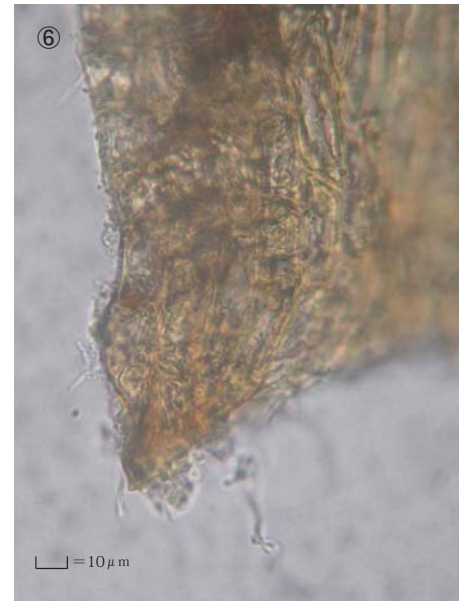
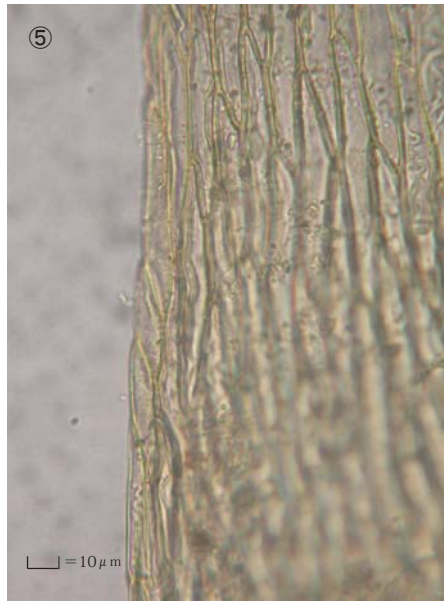
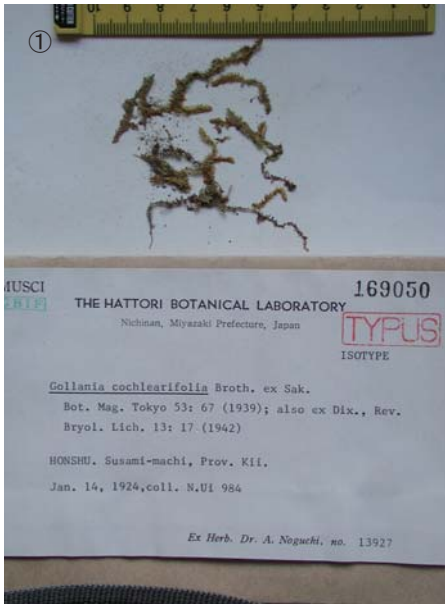


Gollania cochlearifolia Broth. ex Sakurai

Bot. Mag. Tokyo 53: 67 (1939); also ex Dixon, Rev. Bryol. Lich. 13: 17 (1942).
Isotype. Japan. Honshu, Prov. Kii, Susami-machi. coll. N. Ui 984, Jan. 14, 1924
in Herb. Noguchi, no.13927, NICH 169050.



③ Branch leaf. ④ Cells at apex of branch leaf. ⑤ Median laminal cells of branch leaf. ⑥ Cells at base of branch leaf.