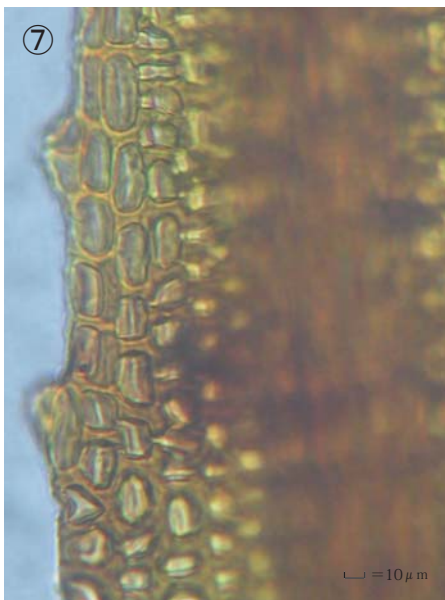
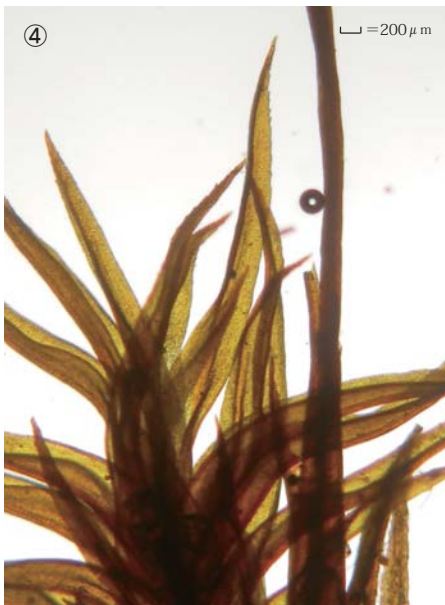
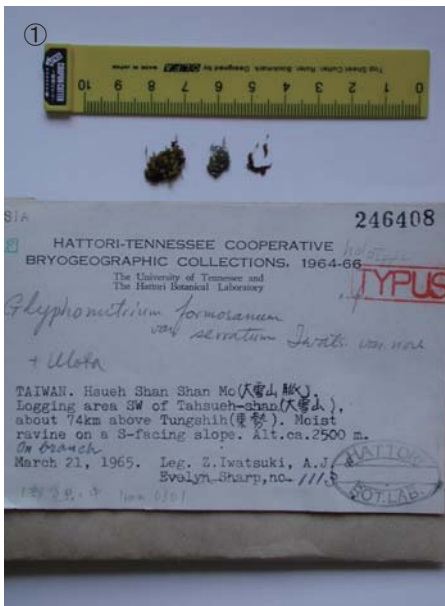


Glyphomitrium formosanum var. *serratum* Z.Iwats.

J. Hattori Bot. Lab. 33: 165, 1970.

Holotype. China (Taiwan), Hsueh Shan Shan Mo, logging area SW of Tahsueh-shan, ca. 2500 m. alt., coll. Z. Iwatsuki & A. J. & Evelyn Sharp 1113, March 21, 1965, NICH 246408.



① Specimen label. ② Plants. ③ Capsule. ④ Leaves. ⑤ A leaf. ⑥ Cells at apex of leaf. ⑦ Median laminal cells. ⑧ Cells at base of leaf.