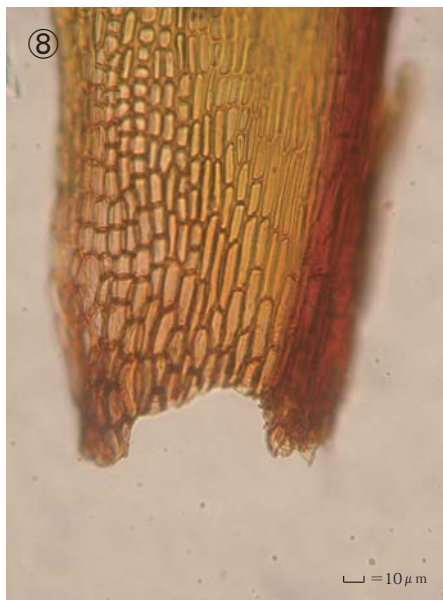
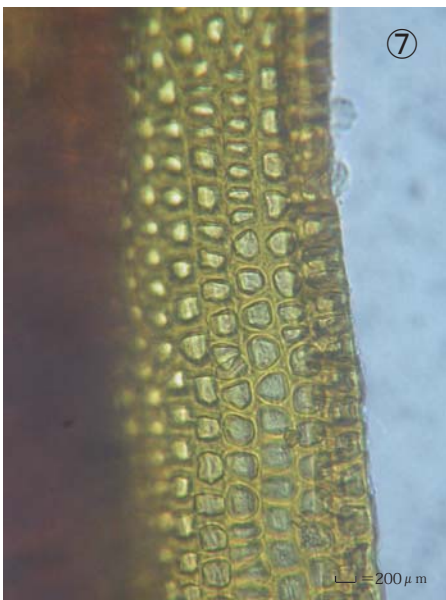
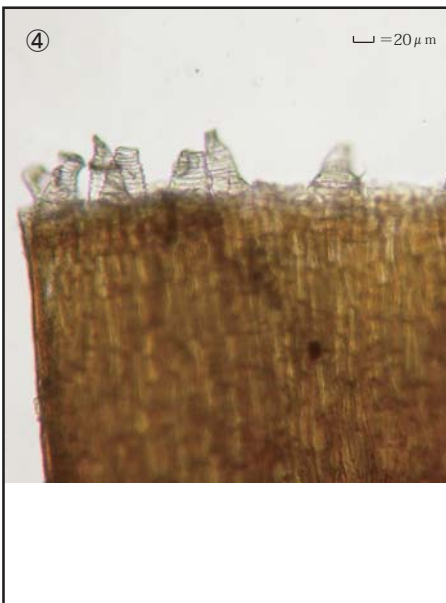
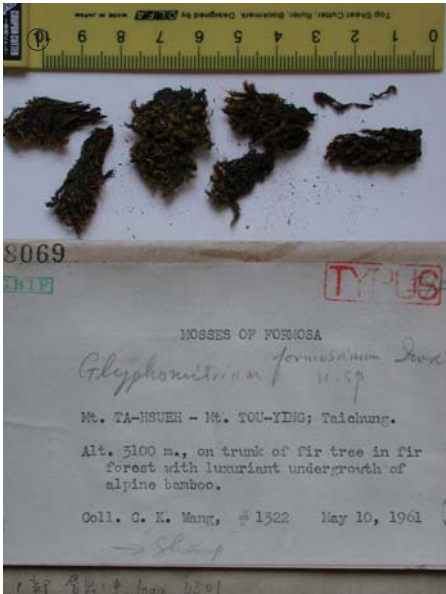


Glyphomitrium formosanum Z. Iwats.

J. Jpn. Bot. 39(6): 179, 1964. Holotype.
 Taiwan, Taihung, between Mt. Ta-Hsueh and Mt. Tou-Ying,
 on trunk of fir trees, ca. 3100 m. alt.,
 coll. C. K. Wang, no. 1322, May 10, 1961, NICH 228069.



① Specimen label. ② Plants. ③ Capsule. ④⑤ Peristome teeth. ⑥ Perichaetial leaves. ⑦ A leaf. ⑧ Median laminal cells. ⑨ Cells at base of leaf.