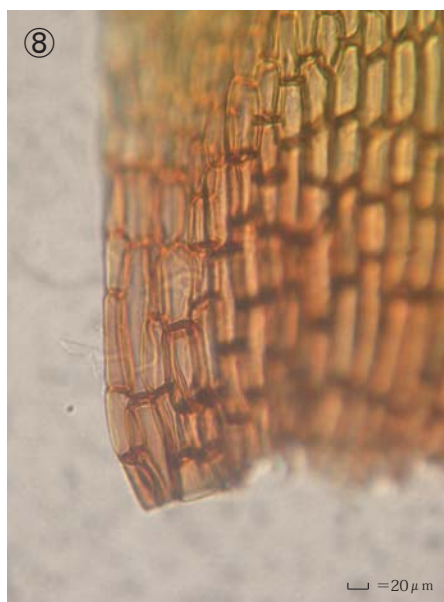
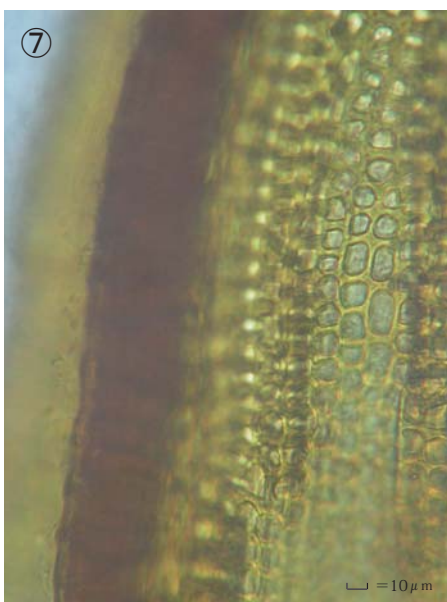
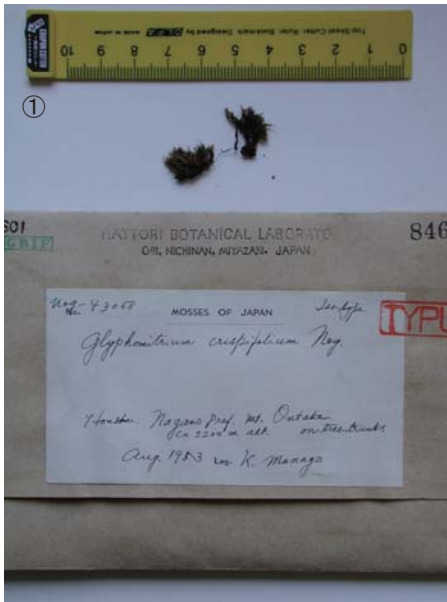


# *Glyphomitrium crispifolium* Nog.

J. Hattori Bot. Lab. 31: 313 (1968).

Isotype. Japan. Honshu, Nagano-ken, Mt. Ontake, ca. 2200m alt., on tree trunks.,  
coll. K. Manago, Aug. 1953, in Herb. Noguchi, 43068, NICH 84618.



① Specimen label. ② Plants. ③ Sporophyte. ④ Perichetial leaves. ⑤ Leaves. ⑥ Cells at apex of leaf. ⑦ Median laminal cells. ⑧ Cells at base of leaf.