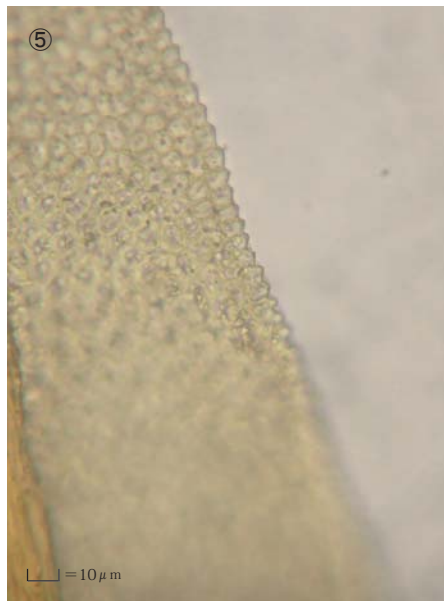
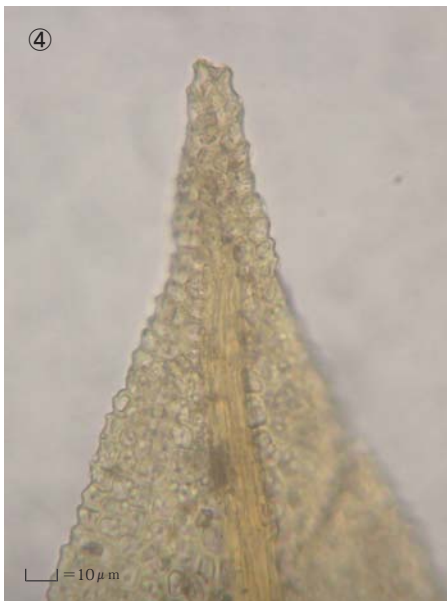
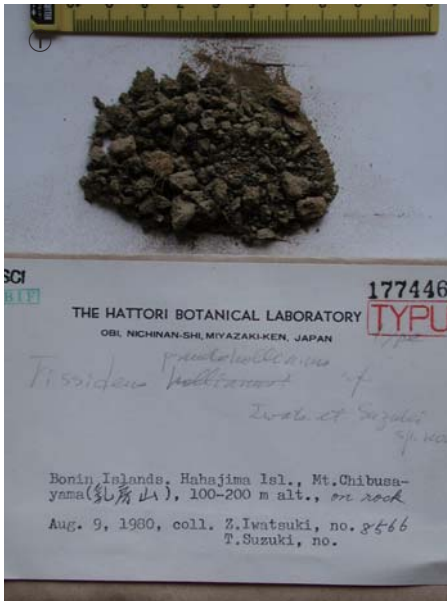


Fissidens pseudohollianus Z.Iwats. & Tad.Suzuki

J. Hattori Bot. Lab. 51: 384 (1982).

Holotype. Japan. Bonin Islands, Hahajima Isl., Mt. Chibusa-yama, 100-200m alt., on rock, coll. Z. Iwatsuki and T. Suzuki, Aug. 9, 1980, NICH177446.



① Label. ② Plants. ③ A fertile plant. ④ Cells at apex of leaf. ⑤ Median laminal cells. ⑥ Cells of vaginant lamina.