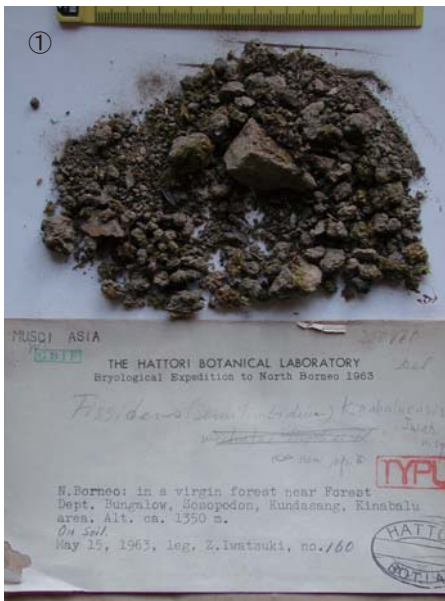


Fissidens kinabaluensis Z.Iwats.

J. Hattori Bot. Lab. 32: 269, 1969.

Holotype. North Borneo, Mt. Kinabalu, Kundason, Sosopodon, 1350 m alt.,
coll. Z. Iwatsuki, May 15, 1963, NICH 250160.



① Label Branch leaf ② Plants. ③ Plant. ④ Cells at apex of leaf. ⑤ Median laminal cells of leaf. ⑥ Axillary hyaline nodules.