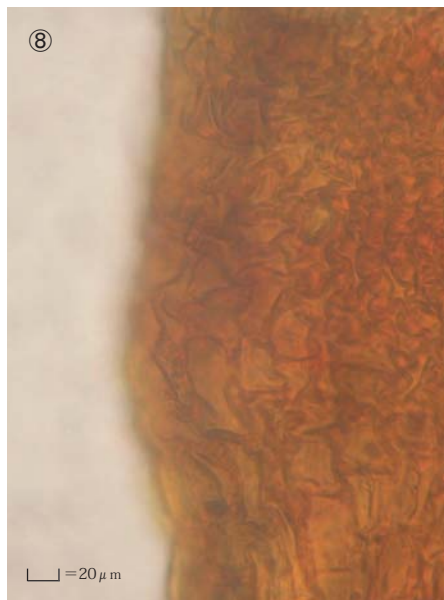
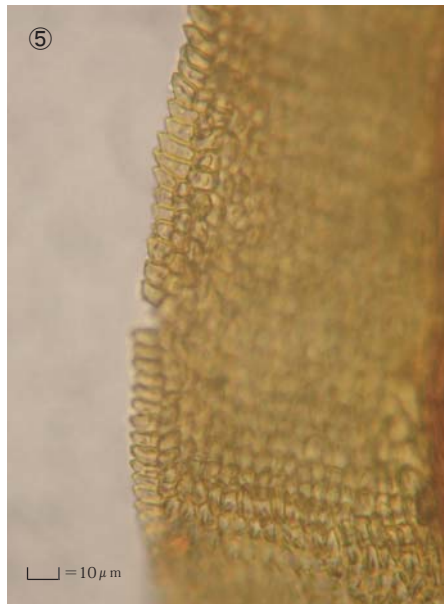
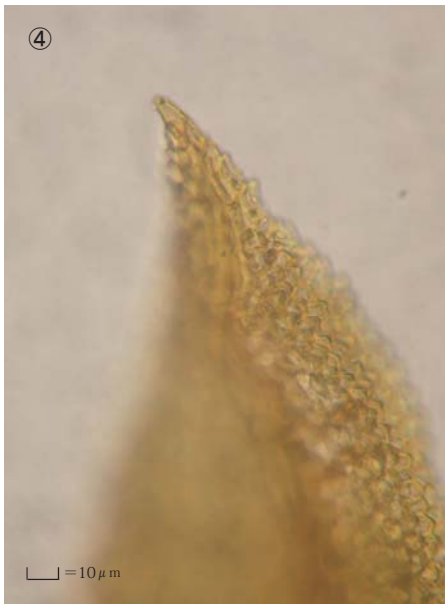
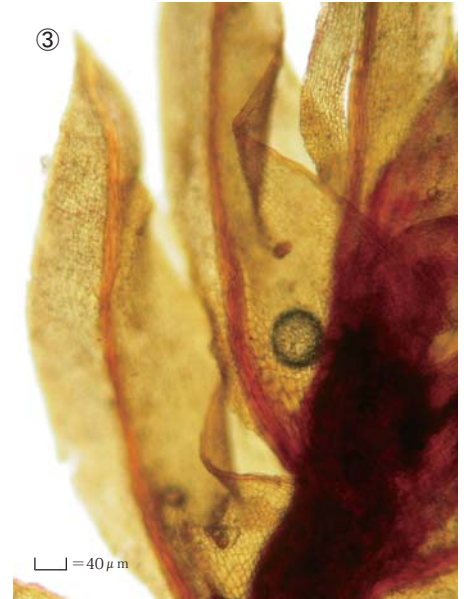
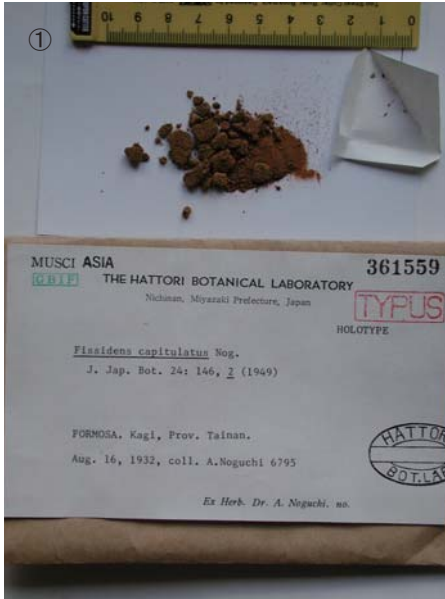


# *Fissidens capitulatus* Nog.

J. Jpn. Bot. 24: 146, 1949.

Holotype. China. Taiwan, Prov. Tainan, Kagi, coll. A. Noguchi,  
Aug. 16, 1932, No. 6795, NICH 361559.



① Label. ② A fertile plant.  
③ Leaves. ④ Cells at apex of  
leaf ⑤ Median laminal cells. ⑥  
Cells at base of dorsal lamina.  
⑦ Operculum. ⑧ Exothecial  
cells.