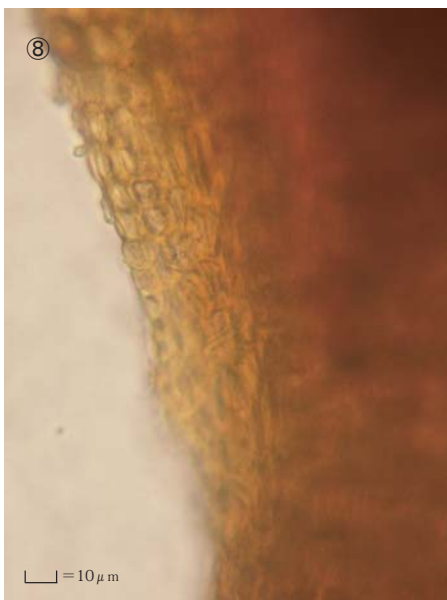
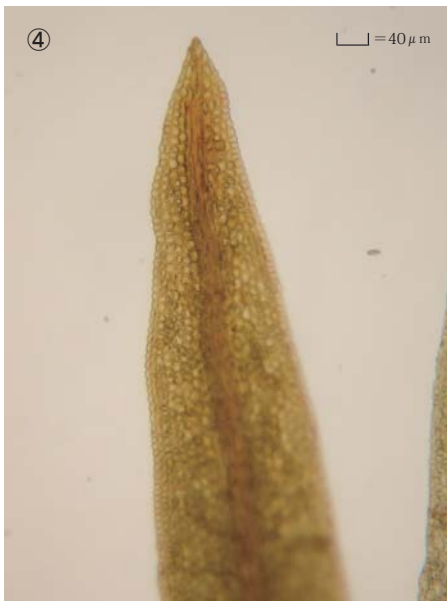
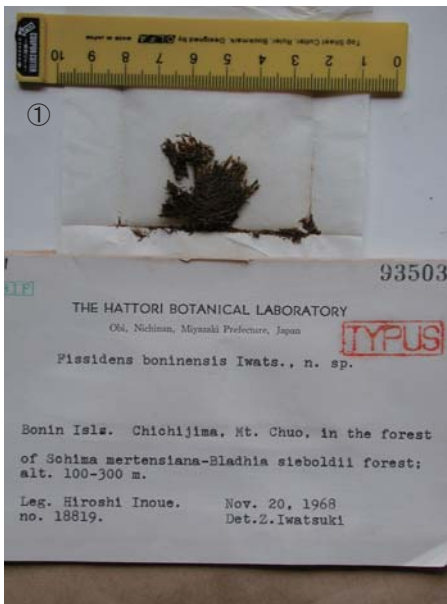


Fissidens boninensis Z.Iwats.

Bull. Nat. Sc. Mus. Tokyo 12: 295, f1 (1969).

Isotypus. Japan. Bonin Isls., Chichijima I., Mt. Chuo, in the forest of *Schima mertensiana*-*Bladhia sieboldii* forest; alt. 100-300m.

coll. Hiroshi Inoue 18819, Nov. 20, 1968, NICH 93503.



①Label. ②Plants. ③Leaves. ④Cells at apex of leaf ⑤Cells of apex of leaf. ⑥ Cells at base of leaf.