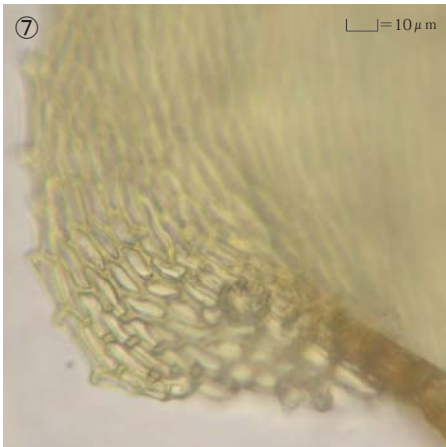
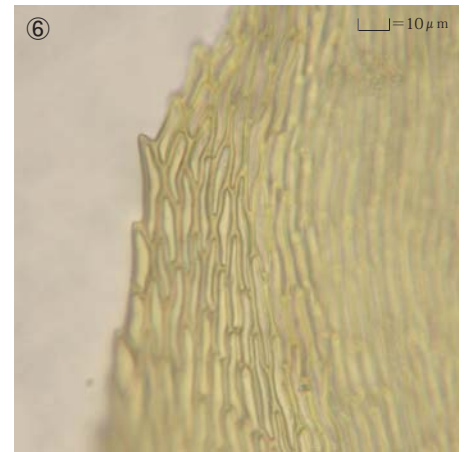
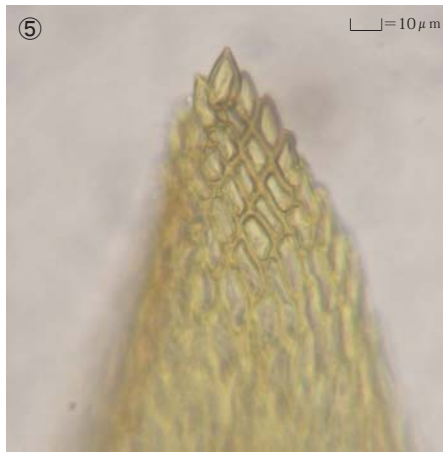
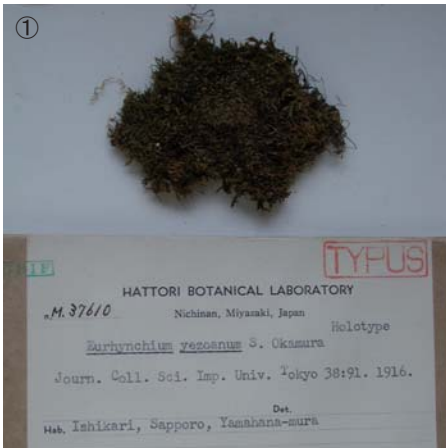


Eurhynchium yezoanum S.Okam.

J. Coll. Sci. Imp. Univ. Tokyo. 38: 91 (1916).

Holotype. Japan. Hokkaido, Ishikari, Sapporo, Yamahana-mura,
coll. Z. Iwasaki, April 21, 1914, NICH 37610.



① Specimen label. ② Plant. ③ A leaf. ④ Cells at apex of leaf ⑤ Median laminal cells. ⑥ Cells at base of leaf ⑦ Cells at base of branch leaf. ⑧ Apex of branch leaf.