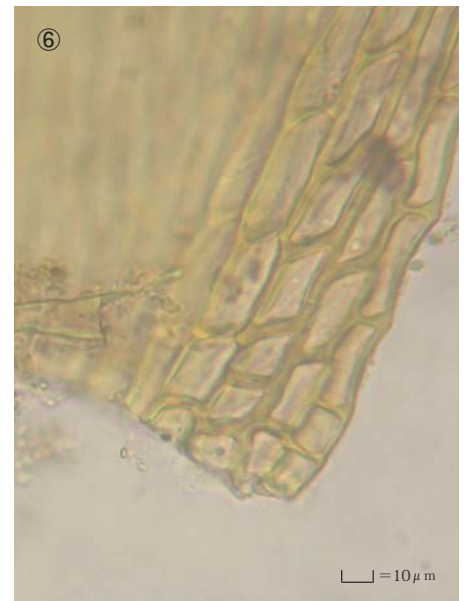
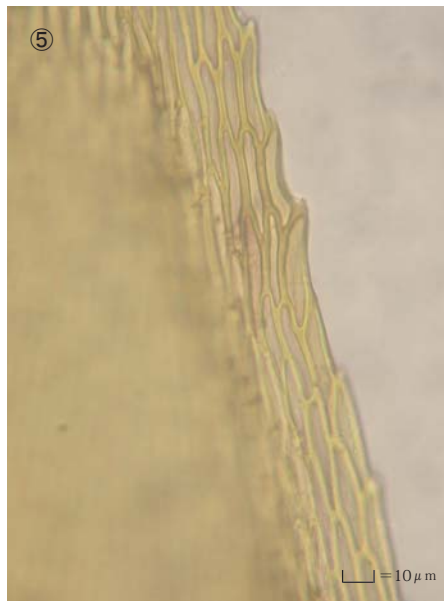
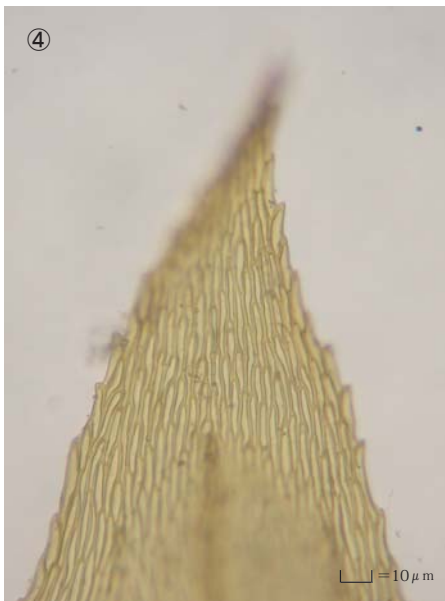
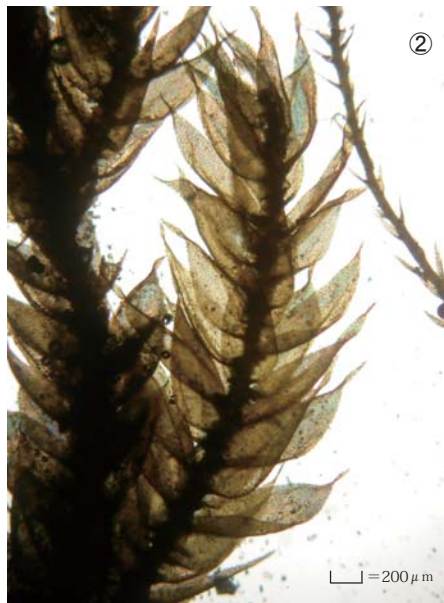
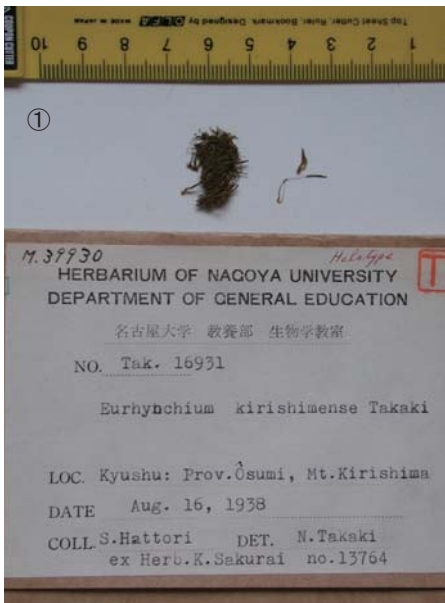


Eurhynchium kirishimense Takaki

J. Hattori. Bot. Lab. 16: 34 (1956)

Holotype. Japan. Kyushu. Prov. Ohsumi, Mt. Kirishima,
coll. S. Hattori, Aug. 16, 1938, NICH M 39930.



① ② Plant. ③ Stem leaves. ④ Cells at apex of stem leaf. ⑤ Median laminal cells of stem leaf. ⑥ Cells at base of branch leaf.