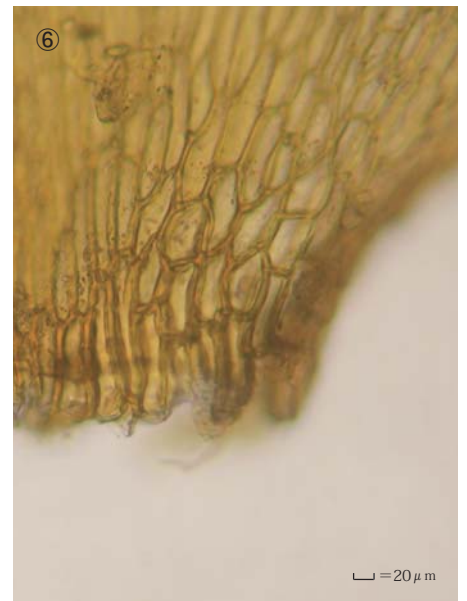
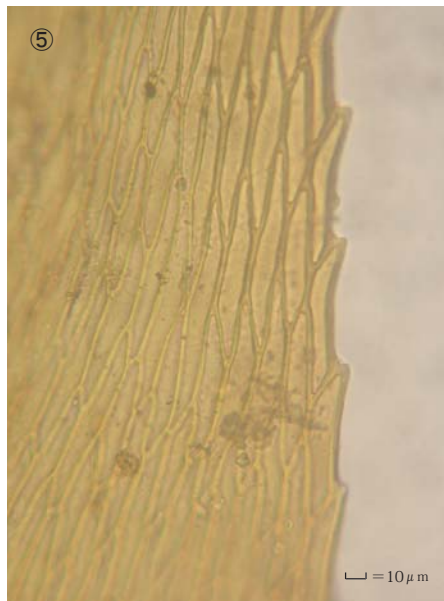
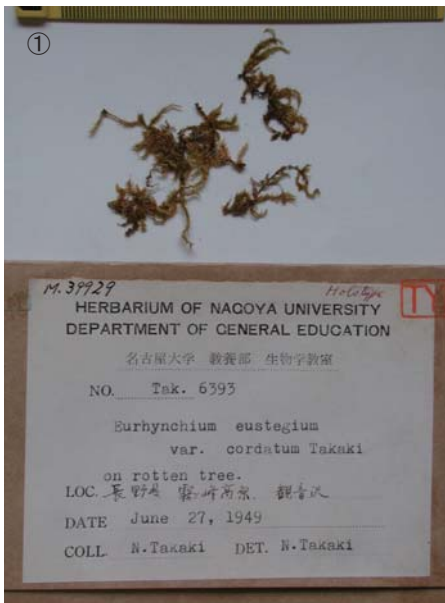


Eurhynchium eustegium var. *cordatum* Takaki

J. Hattori. Bot. Lab. 16: 31 (1956)

Holotype. Japan. Honshu. Nagano-ken, Kirigamine, Kannon-zawa Valley, on rotten tree,
coll. N. Takaki, June 27, 1949, NICH M39929.



① ② ③ Stem leaves. ④ Cells at apex of stem leaf. ⑤ Median laminal cells of stem leaf. ⑥ Cells at base of branch leaf.