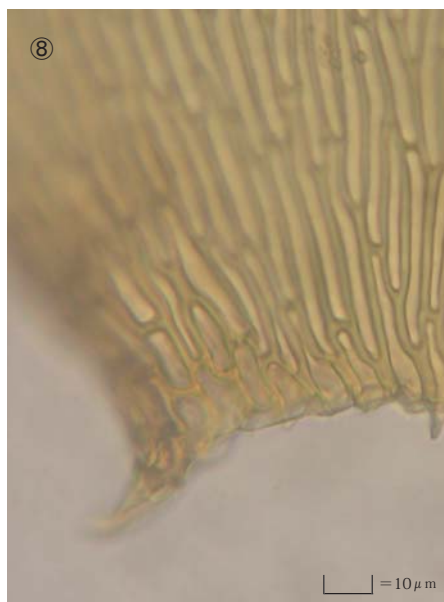
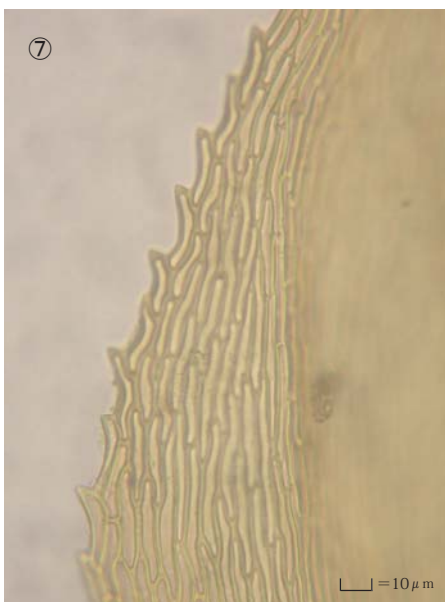
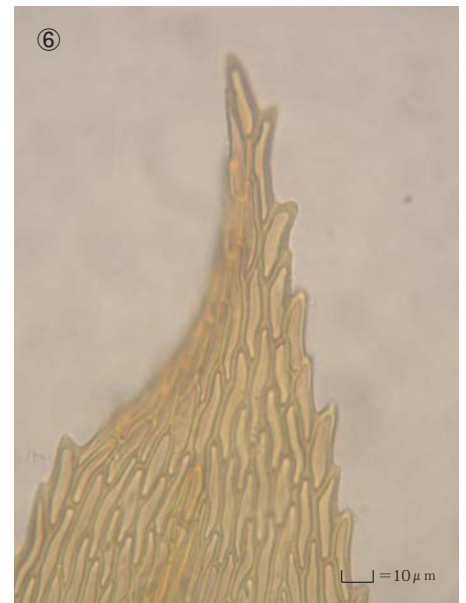
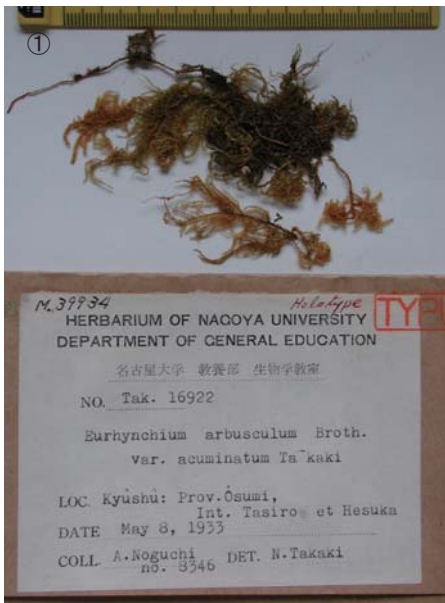


Eurhynchium arbusculum Broth. var. *acuminatum* Takaki

J. Hattori. Bot. Lab. 16: 30 (1956).

Holotype. Japan. Kyushu, Prov. Ohsumi, int. Tasiro et Hetuka,
coll. A. Noguchi 8346, May. 8, 1933, in herb NICH M39934.



①②③④ Plant. ⑤ Stem leaves. ⑥ Cells at apex of stem leaf. ⑦ Median laminal cells of stem leaf. ⑧ Cells at base of branch leaf.