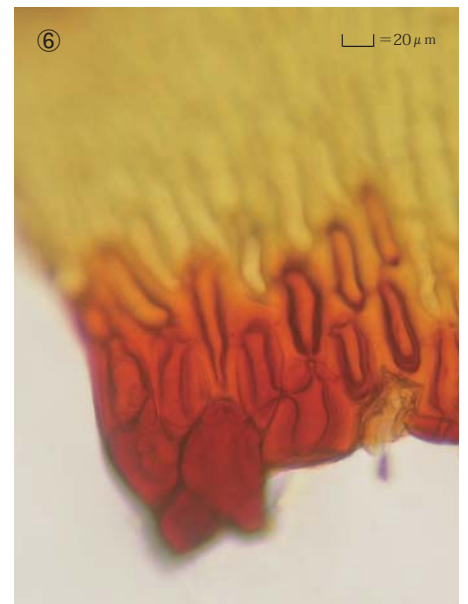
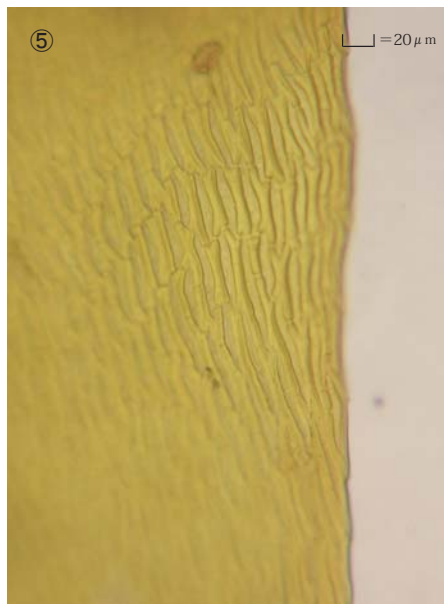
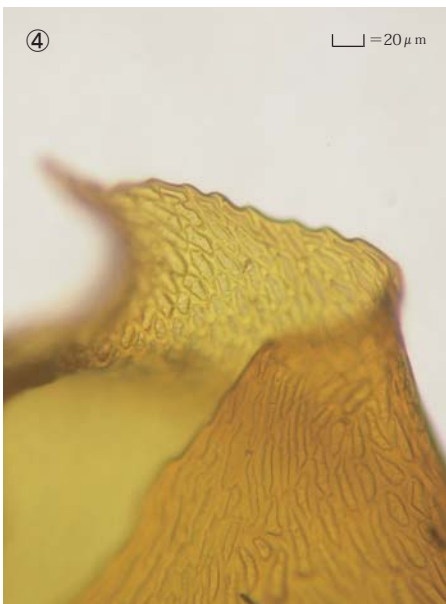
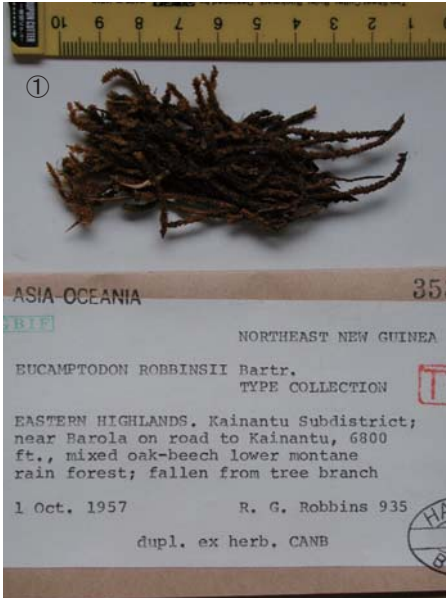


Eucamptodon robbinsii Bartr.

Brittonia 11:88, 1959. Isotype.

New Guinea, Eastern Highland, Kainantu Sub-district, near Barola on road to Kainantu, 6800 ft., fallen from tree branch, coll. R. G. Robbins, Oct. 1, 1957, No. 935, NICH 353538.



① Specimen label. ② Plant. ③ Stem leaves. ④ Cells at apex of stem leaf. ⑤ Median laminal cells of stem leaf. ⑥ Cells at base of branch leaf.