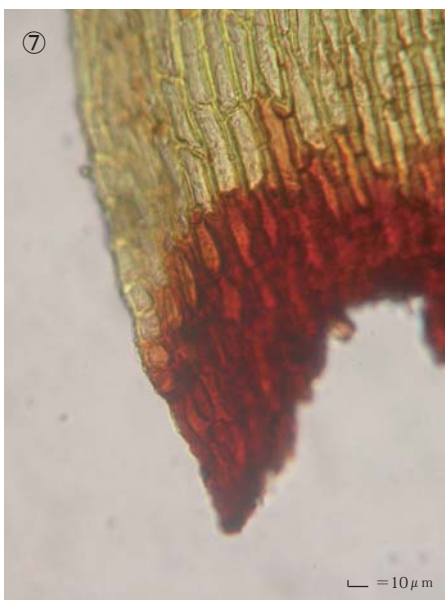
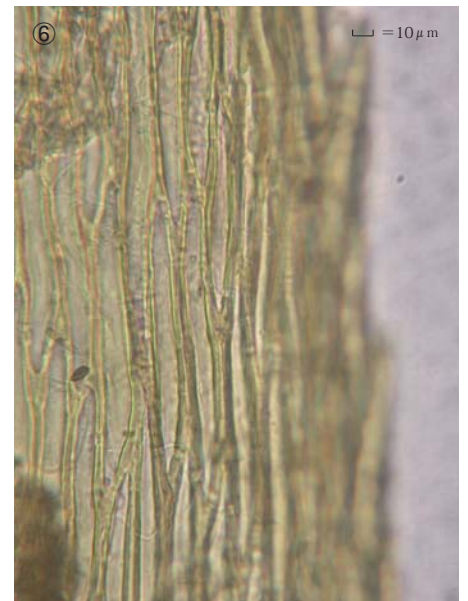
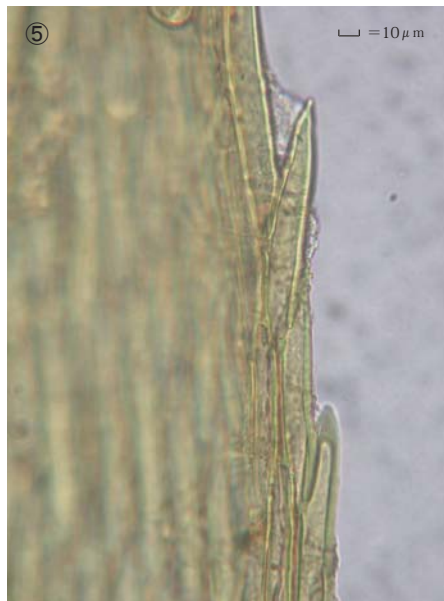
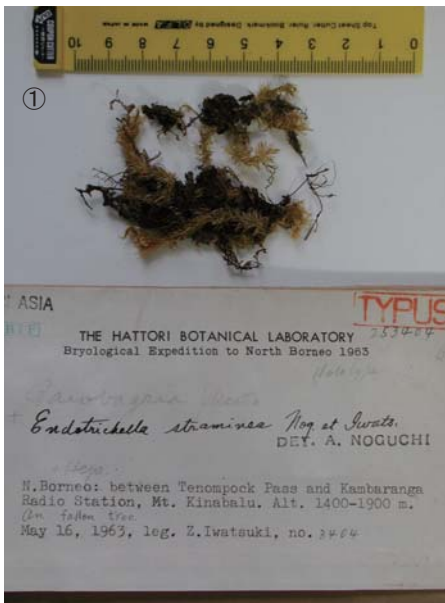


Endotrichella straminosa Nog. & Z. Iwats.

J. Hattori Bot. Lab. 36: 459, 1972.

Holotype. N. Borneo, Mt. Kinabalu, between Tenompock Pass and Kamaranga Radio Station, alt. 1400-1900 m, on fallen, dry trunk, coll. Z. Iwatsuki, May 16, 1963, NICH 253404.



① Specimen label. ② Plants. ③ A leaf. ④ Apex of leaf. ⑤⑥ Median laminal cells. ⑦ Cells at base of leaf.