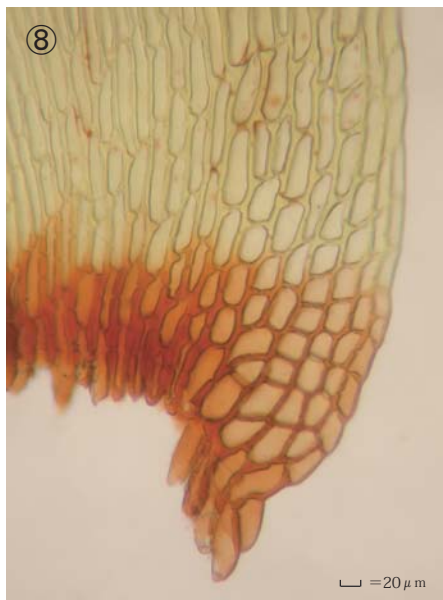
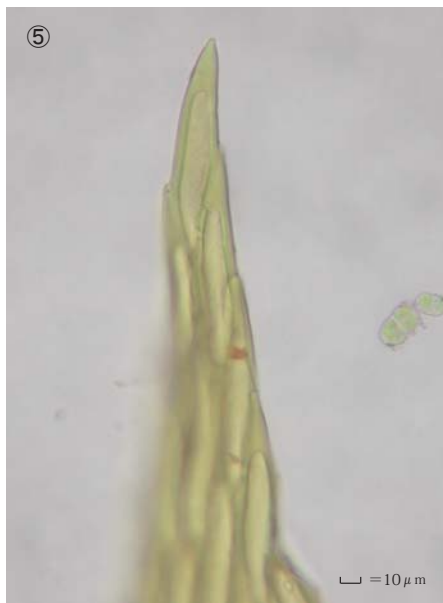
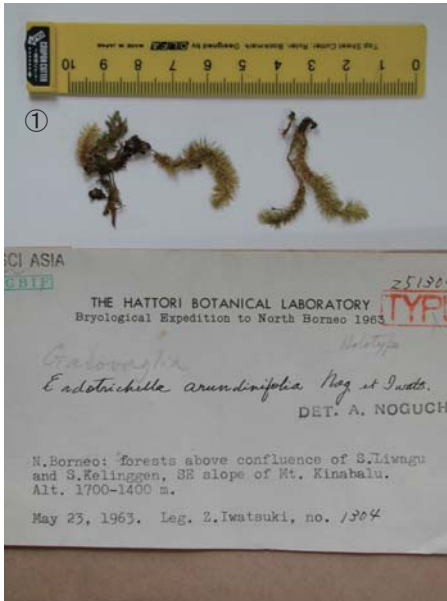


Endotrichella arundinifolia Nog. & Z.Iwats.

J. Hattori Bot. Lab. 36: 458, 1972.

Holotype. N. Borneo, Mt. Kinabalu, forest above confluence of S. Liwagu and S. Kelinggen, alt. 1400-1700 m, on a partly shaded trunk, coll. Z. Iwatsuki, May 23, 1963, NICH 251304.



① Specimen label. ② Plants. ③ A leaf. ④⑤ Leaf apices. ⑥ Marginal cells of leaf. ⑦ Median laminal cells. ⑧ Basal cells of leaf.