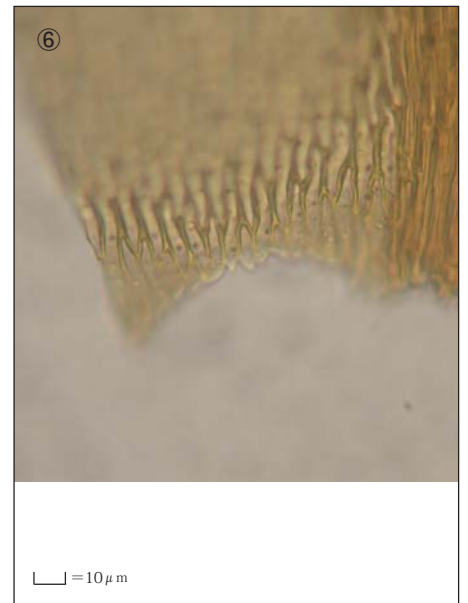
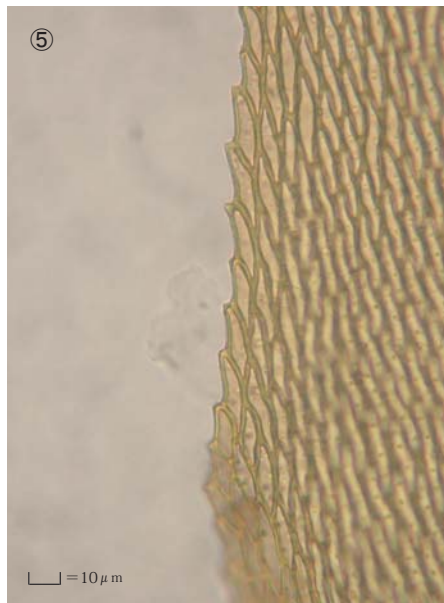
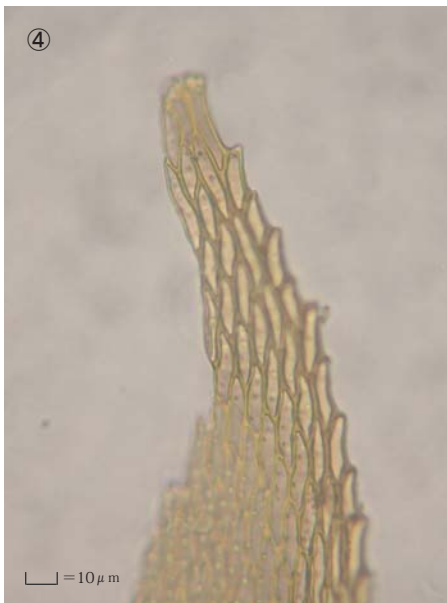
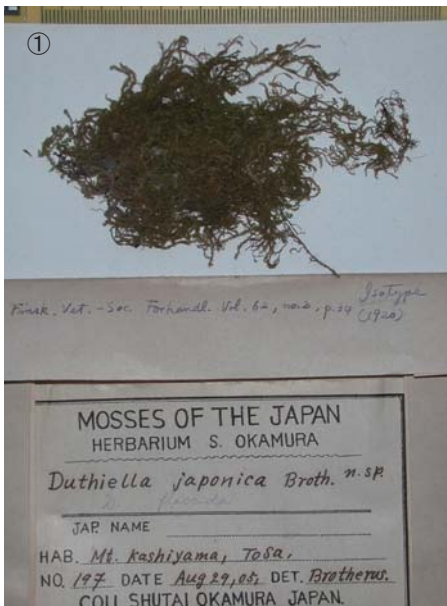


Duthiella japonica Broth.

Finsk. Vet.-Soc. Forhandl. 62:34. (1921).

Isotype. Japan. Shikoku. Prov. Tosa, Mt. Kashiya. coll. S. Okamura 197,
Aug. 29, 1905, NICH M37590.



① ② ③ Stem leaves. ④ Cells at apex of stem leaf. ⑤ Median laminal cells of stem leaf. ⑥ Cells at base of branch leaf.