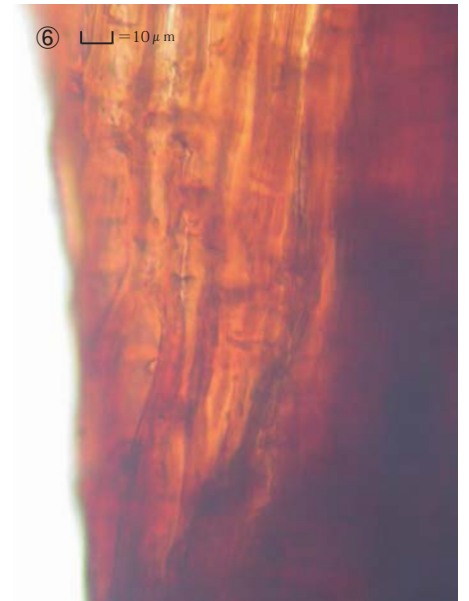
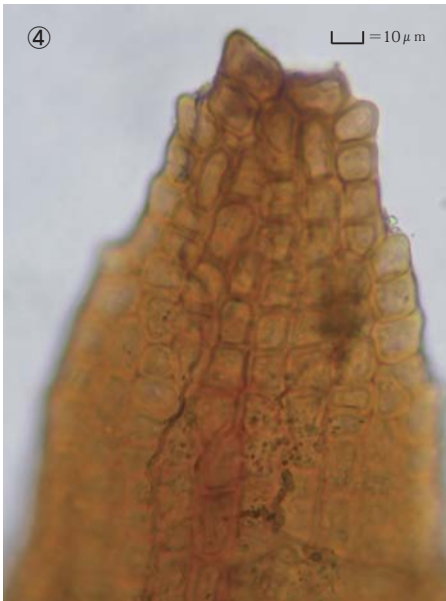
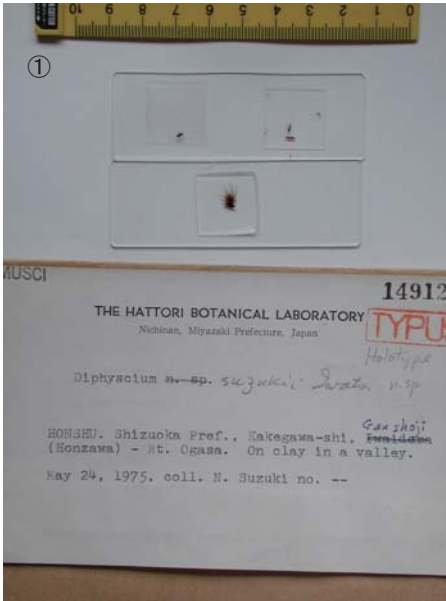


*Diphyscium suzukii* Z. Iwats.

J. Hattori. Bot. Lab. 40: 143. f. 3-7 (1976).

Holotype. Japan. Honshu, Shizuoka-shi, Ganshoji, Honzawa, 150m alt. on clayey soil, coll. T. Suzuki, NICH 149123.



①②③ Stem leaf. ④ Cells at apex of stem leaf. ⑤ Median laminal cells of stem leaf. ⑥⑦ Cells at base of stem leaf.