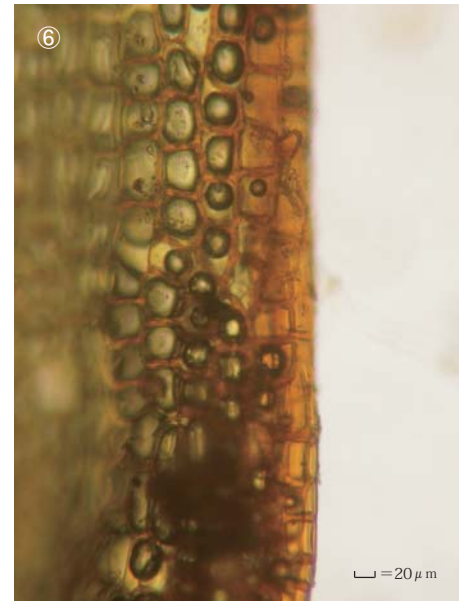
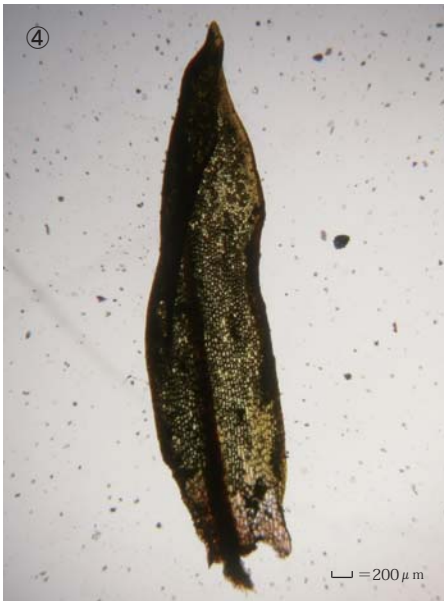
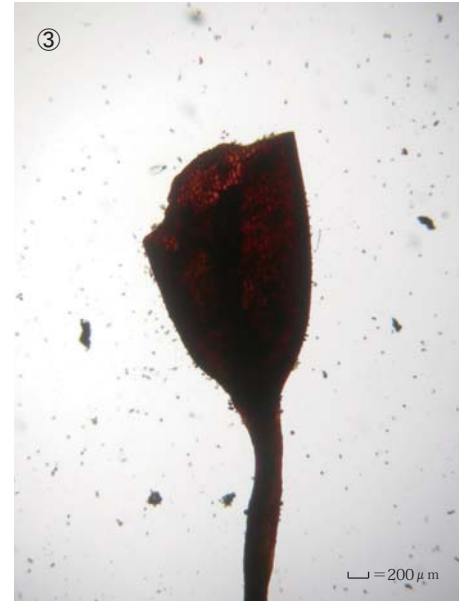
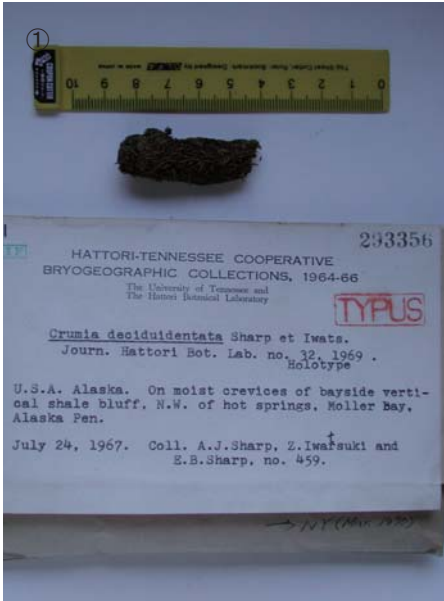


# *Crumia deciduidentata* Sharp et Z.Iwats.

J. Hattori Bot. Lab. 32: 95 (1969)

Holotype. U.S.A. Alaska, coll. A. J. Sharp, Z. Iwatsuki and E. B. Sharp,  
July 24, 1967, NICH 293356.



① Specimen label. ② Plants. ③ Capsule. ④ A leaf. ⑤ Cells at apex of leaf. ⑥ Median laminal cells of leaf. ⑦ Cells at base of leaf.