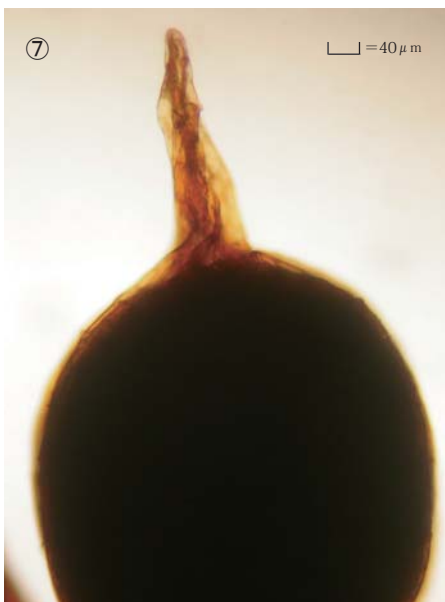
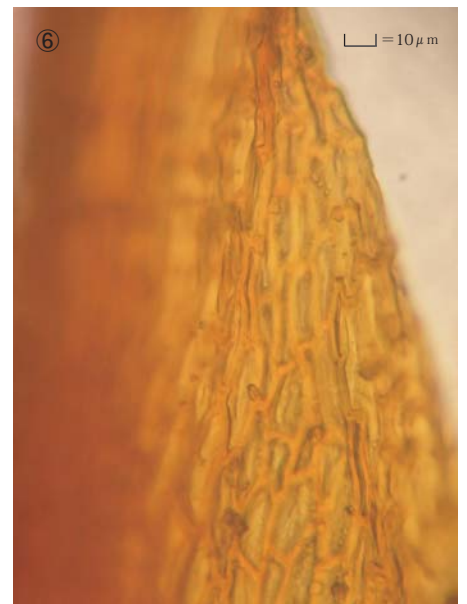
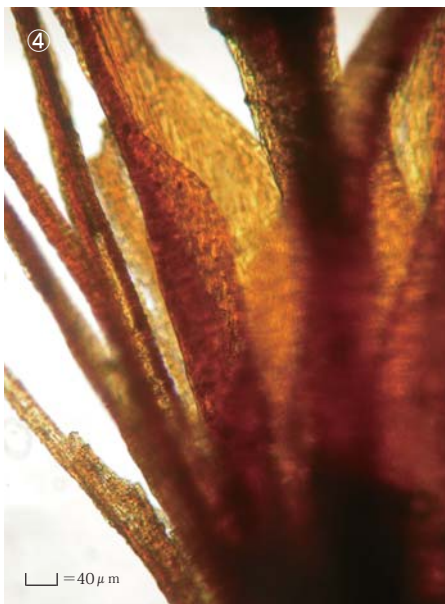
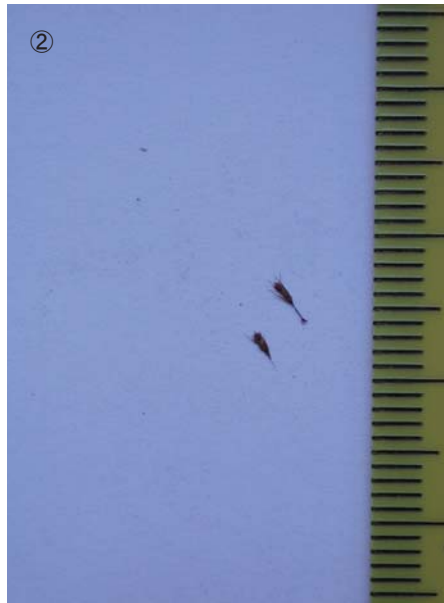
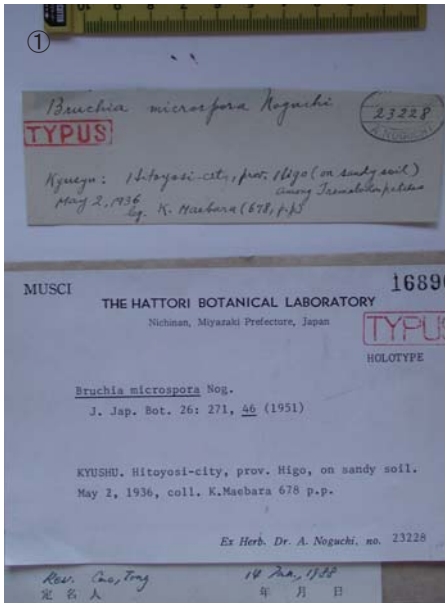


Bruchia microspora Nog.

J. Jpn. Bot. 26: 271 (1951).

Holotype, Japan. Kyushu, Kumamoto-ken, Hitoyoshi, on sandy soil, coll. K. Mayebara, NICH 168962.



① Label. ② Plants. ③ Fertile plant. ④ Leaves. ⑤ Leaf apices. ⑥ Cells at base of leaf. ⑦ Capsule.